



ELECTRONIC COPY

LABORATORY GROWN DIAMOND REPORT

LG620438955

Report verification at igi.org

**LABORATORY GROWN
DIAMOND REPORT**

LABORATORY GROWN DIAMOND REPORT

LABORATORY GROWN DIAMOND REPORT

February 7, 2024
 IGI Report Number **LG620438955**
 Description **LABORATORY GROWN
DIAMOND**
 Shape and Cutting Style **PRINCESS CUT**
 Measurements **8.07 X 8.01 X 5.57 MM**

GRADING RESULTS

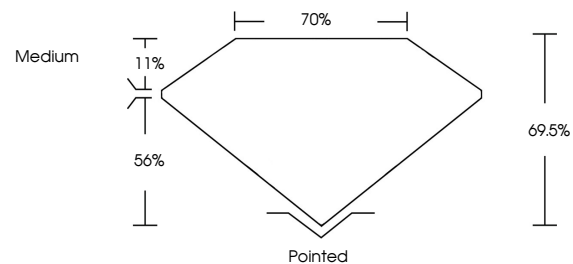
Carat Weight **3.09 CARATS**
 Color Grade **G**
 Clarity Grade **VVS 2**

ADDITIONAL GRADING INFORMATION

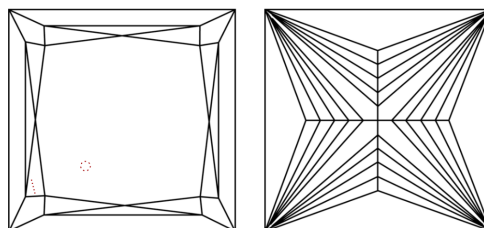
Polish **EXCELLENT**
 Symmetry **EXCELLENT**
 Fluorescence **NONE**
 Inscription(s) **IGI LG620438955**

Comments: This Laboratory Grown Diamond was created by Chemical Vapor Deposition (CVD) growth process and may include post-growth treatment. Type IIa

PROPORTIONS



CLARITY CHARACTERISTICS



KEY TO SYMBOLS

Red symbols indicate internal characteristics.
 Green symbols indicate external characteristics.

GRADING SCALES

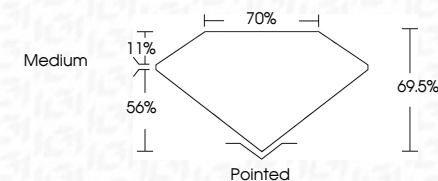
CLARITY

IF	VVS ¹⁻²	VS ¹⁻²	SI ¹⁻²	I ¹⁻³
Internally Flawless	Very Very Slightly Included	Very Slightly Included	Slightly Included	Included

COLOR

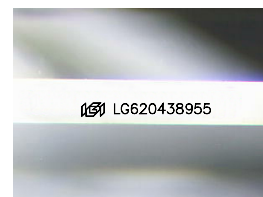
D	E	F	G	H	I	J	Faint	Very Light	Light
---	---	---	---	---	---	---	-------	------------	-------

February 7, 2024
 IGI Report Number **LG620438955**
 Description **LABORATORY GROWN
DIAMOND**
 Shape and Cutting Style **PRINCESS CUT**
 Measurements **8.07 X 8.01 X 5.57 MM**
GRADING RESULTS
 Carat Weight **3.09 CARATS**
 Color Grade **G**
 Clarity Grade **VVS 2**



ADDITIONAL GRADING INFORMATION

Polish **EXCELLENT**
 Symmetry **EXCELLENT**
 Fluorescence **NONE**
 Inscription(s) **IGI LG620438955**
 Comments: This Laboratory Grown Diamond was created by Chemical Vapor Deposition (CVD) growth process and may include post-growth treatment. Type IIa



Sample Image Used



IGI

February 7, 2024
 IGI Report No. **LG620438955**
PRINCESS CUT
3.09 CARATS
 Carat Weight **G**
 Color Grade **VVS 2**
 Depth **69.5%**
 Table **70%**
 Girdle **Medium**
 Culet **Pointed**
 Polish **EXCELLENT**
 Symmetry **EXCELLENT**
 Fluorescence **NONE**
 Inscription(s) **IGI LG620438955**

Comments: This Laboratory Grown Diamond was created by Chemical Vapor Deposition (CVD) growth process and may include post-growth treatment. Type IIa