



LABORATORY GROWN DIAMOND REPORT

February 10, 2024	
IGI Report Number	LG620450789
Description	LABORATORY GROWN DIAMOND
Shape and Cutting Style	PRINCESS CUT
Measurements	7.45 X 7.32 X 5.26 MM

Carat Weight	2.54 CARATS
Color Grade	F
Clarity Grade	VS 1

Polish	EXCELLENT
Symmetry	EXCELLENT
Fluorescence	NONE

Inscription(s)  LG620450789

Comments: This Laboratory Grown Diamond was created by Chemical Vapor Deposition (CVD) growth process and may include post-growth treatment.
Type IIa

LG620450789
Report verification at igi.org

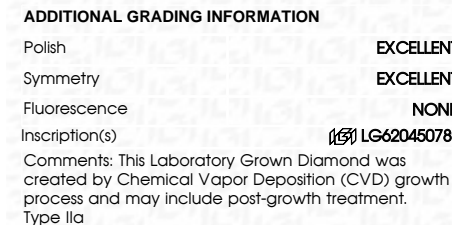
Figure 1 is a diamond-shaped diagram representing a perceptual space. The top horizontal edge is labeled '72%'. The left vertical edge is labeled '56.5%'. The right vertical edge is labeled '71.9%'. The bottom vertex is labeled 'Pointed'. The top-left vertex is labeled 'Medium'.

Red symbols indicate internal characteristics.
Green symbols indicate external characteristics.

D E F G H I J Faint Very Light Light



February 10, 2024	
IGI Report Number	LG620450789
Description	LABORATORY GROWN DIAMOND
Shape and Cutting Style	PRINCESS CUT
Measurements	7.45 X 7.32 X 5.26 MM
GRADING RESULTS	
Carat Weight	2.54 CARATS
Color Grade	F
Clarity Grade	VS 1



FD - 10 20

 THIS DOCUMENT WAS PRODUCED WITH THE FOLLOWING SECURITY MEASURES: SPECIAL DOCUMENT PAPER, INK SCREENS, WATERMARK BACKGROUND DESIGNS, HOLOGRAM AND OTHER SECURITY FEATURES NOT LISTED AND DO EXCEED DOCUMENT SECURITY INDUSTRY GUIDELINES.

February 10, 2024
GI Report No LG620450789
PRINCESS CUT

4.5 X 7.32 X 5.26 MM	Carat Weight	2.54 CARATS
	Color Grade	F
	Clarity Grade	VS 1
	Depth	71.9%
	Table	72%
	Girdle	Medium
	Culet	Pointed
	Polish	EXCELLENT
	Symmetry	EXCELLENT
	Fluorescence	NONE
	Report #	CA2014072760

Comments:
This Laboratory Grown Diamond was created by Chemical Vapor Deposition (CVD) growth process and may include post-growth treatment.
Type IIa