



ELECTRONIC COPY

LABORATORY GROWN DIAMOND REPORT

LG620451717

Report verification at igi.org

LABORATORY GROWN DIAMOND REPORT

LABORATORY GROWN DIAMOND REPORT

LABORATORY GROWN DIAMOND REPORT

February 8, 2024
IGI Report Number LG620451717
Description LABORATORY GROWN DIAMOND
Shape and Cutting Style ROUND BRILLIANT
Measurements 10.40 - 10.48 X 6.42 MM

GRADING RESULTS

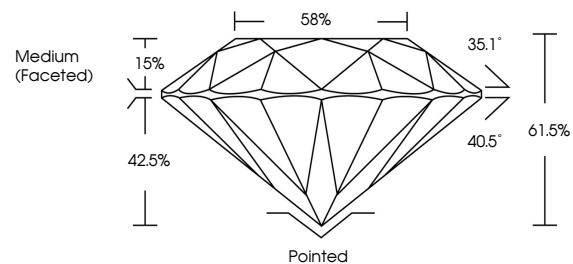
Carat Weight 4.35 CARATS
Color Grade D
Clarity Grade INTERNALLY FLAWLESS
Cut Grade IDEAL

ADDITIONAL GRADING INFORMATION

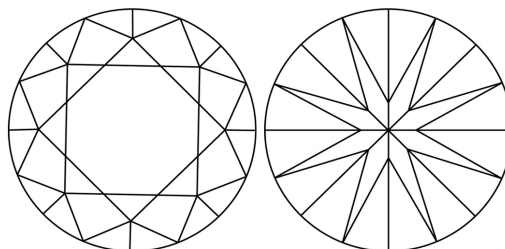
Polish EXCELLENT
Symmetry EXCELLENT
Fluorescence NONE
Inscription(s) IGI LG620451717

Comments: HEARTS & ARROWS
As Grown - No indication of post-growth treatment.
This Laboratory Grown Diamond was created by High Pressure High Temperature (HPHT) growth process.
Type II

PROPORTIONS



CLARITY CHARACTERISTICS



KEY TO SYMBOLS

Red symbols indicate internal characteristics.
Green symbols indicate external characteristics.



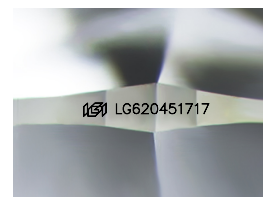
GRADING SCALES

CLARITY

Table mapping clarity grades (IF, VVS, VS, SI, I) to their descriptions (Internally Flawless, Very Very Slightly Included, etc.).

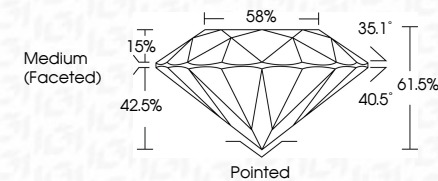
COLOR

Table mapping color grades (D, E, F, G, H, I, J) to their descriptions (Faint, Very Light, Light).



Sample Image Used

February 8, 2024
IGI Report Number LG620451717
Description LABORATORY GROWN DIAMOND
Shape and Cutting Style ROUND BRILLIANT
Measurements 10.40 - 10.48 X 6.42 MM
GRADING RESULTS
Carat Weight 4.35 CARATS
Color Grade D
Clarity Grade INTERNALLY FLAWLESS
Cut Grade IDEAL



ADDITIONAL GRADING INFORMATION

Polish EXCELLENT
Symmetry EXCELLENT
Fluorescence NONE
Inscription(s) IGI LG620451717

Comments: HEARTS & ARROWS
As Grown - No indication of post-growth treatment.
This Laboratory Grown Diamond was created by High Pressure High Temperature (HPHT) growth process.
Type II



February 8, 2024
IGI Report No LG620451717
ROUND BRILLIANT
10.40 - 10.48 X 6.42 MM
4.35 CARATS
Color Grade D
Clarity Grade IF
Cut Grade IDEAL
Depth 61.5%
Table 15%
Girdle 58%
Medium (Faceted)
Culet Pointed
Polish EXCELLENT
Symmetry EXCELLENT
Fluorescence NONE
Inscriptions(s) IGI LG620451717
Comments: HEARTS & ARROWS
As Grown - No indication of post-growth treatment.
This Laboratory Grown Diamond was created by High Pressure High Temperature (HPHT) growth process.
Type II