



ELECTRONIC COPY

LABORATORY GROWN DIAMOND REPORT

February 2, 2024	
IGI Report Number	LG620472754
Description	LABORATORY GROWN DIAMOND
Shape and Cutting Style	ROUND BRILLIANT
Measurements	7.23 - 7.25 X 4.42 MM

GRADING RESULTS

Carat Weight	1.42 CARAT
Color Grade	D
Clarity Grade	VVS 2
Cut Grade	IDEAL

ADDITIONAL GRADING INFORMATION

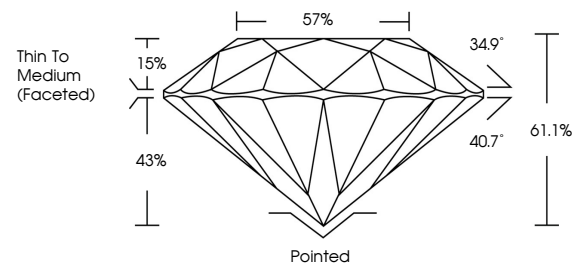
Polish	EXCELLENT
Symmetry	EXCELLENT
Fluorescence	NONE
Inscription(s)	LG620472754

Comments: As Grown - No indication of post-growth treatment.
This Laboratory Grown Diamond was created by High Pressure High Temperature (HPHT) growth process.
Type II

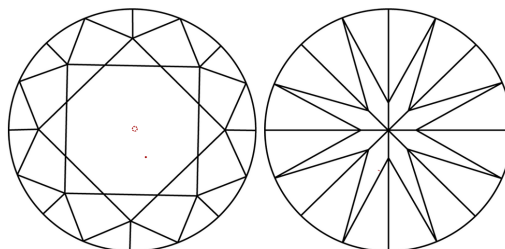
LABORATORY GROWN DIAMOND REPORT

LG620472754
Report verification at igi.org

PROPORTIONS



CLARITY CHARACTERISTICS



KEY TO SYMBOLS

Red symbols indicate internal characteristics.
Green symbols indicate external characteristics.

LABORATORY GROWN
DIAMOND REPORT

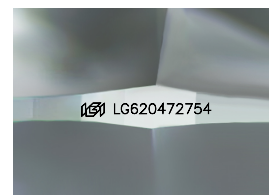
GRADING SCALES

CLARITY

IF	VVS ¹⁻²	VS ¹⁻²	SI ¹⁻²	I ¹⁻³
Internally Flawless	Very Very Slightly Included	Very Slightly Included	Slightly Included	Included

COLOR

D E F G H I J Faint Very Light Light



Sample Image Used



© IGI 2020, International Gemological Institute

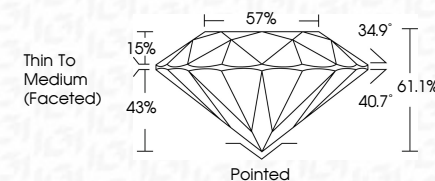
FD - 10 20

www.igi.org

LABORATORY GROWN DIAMOND REPORT

February 2, 2024	
IGI Report Number	LG620472754
Description	LABORATORY GROWN DIAMOND
Shape and Cutting Style	ROUND BRILLIANT
Measurements	7.23 - 7.25 X 4.42 MM

GRADING RESULTS	
Carat Weight	1.42 CARAT
Color Grade	D
Clarity Grade	VVS 2
Cut Grade	IDEAL



ADDITIONAL GRADING INFORMATION

Polish	EXCELLENT
Symmetry	EXCELLENT
Fluorescence	NONE
Inscription(s)	(G) LG620472754
Comments: As Grown - No indication of post-growth treatment.	
This Laboratory Grown Diamond was created by High Pressure High Temperature (HPHT) growth process.	
Type II	



February 2, 2024	GI Report No LG50072754	ROUND BRILLIANT	7.23 - 7.25 x 4.42 MM	Color Grade	1.42 CARAT	D	VVS2	IDEAL	61.1%	57%	Thin To Medium (Faceted)	Pointed	EXCELLENT	EXCELLENT	NONE	681 LG50072754	Comments: No indication of post-growth treatment. This Laboratory Growth Diamond was created by High Pressure High Temperature (HPHT) growth process. Type II
				Carat Weight								Culet	Polish	Symmetry	Fluorescence	Inscriptions(s)	
				Color Grade			Clarity Grade	Our Grade			Depth						
											Table						
											Girdle						