



**ELECTRONIC COPY**

## LABORATORY GROWN DIAMOND REPORT

February 3, 2024	
IGI Report Number	LG620487521
Description	LABORATORY GROWN DIAMOND
Shape and Cutting Style	ROUND BRILLIANT
Measurements	8.96 - 8.99 X 5.48 MM

## GRADING RESULTS

Carat Weight	2.73 CARATS
Color Grade	H
Clarity Grade	VS 1
Cut Grade	IDEAL

### ADDITIONAL GRADING INFORMATION

Polish	EXCELLENT
Symmetry	EXCELLENT
Fluorescence	NONE
Inscription(s)	 LG620487521

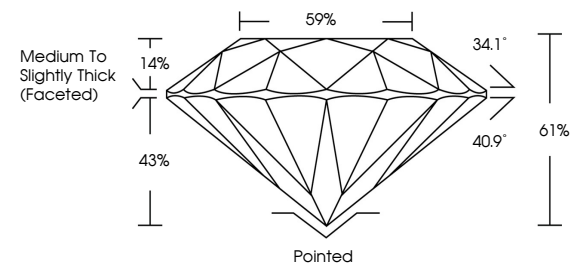
Comments: This Laboratory Grown Diamond was created by Chemical Vapor Deposition (CVD) growth process and may include post-growth treatment.  
Type IIa

## LABORATORY GROWN DIAMOND REPORT

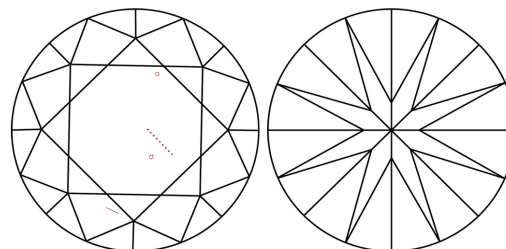
LG620487521

Report verification at [igi.org](http://igi.org)

## PROPORTIONS



## CLARITY CHARACTERISTICS



## KEY TO SYMBOLS

Red symbols indicate internal characteristics.  
Green symbols indicate external characteristics.

LABORATORY GROWN  
DIAMOND REPORT

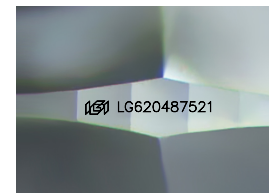
## GRADING SCALES

## CLARITY

IF	VVS <sup>1-2</sup>	VS <sup>1-2</sup>	SI <sup>1-2</sup>	I <sup>1-3</sup>
Internally Flawless	Very Very Slightly Included	Very Slightly Included	Slightly Included	Included

**COLOR**

D E F G H I J Faint Very Light Light



Sample Image Used



© IGI 2020, International Gemological Institute

FD - 10 20

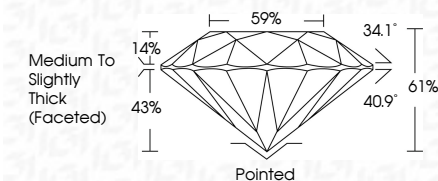
**www.igi.org**

## LABORATORY GROWN DIAMOND REPORT

February 3, 2024	
IGI Report Number	LG620487521
Description	LABORATORY GROWN DIAMOND
Shape and Cutting Style	ROUND BRILLIANT
Measurements	8.96 - 8.99 X 5.48 MM

## GRADING RESULTS

Carat Weight	2.73 CARATS
Color Grade	H
Clarity Grade	VS 1
Cut Grade	IDEAL



### ADDITIONAL GRADING INFORMATION

Polish	EXCELLENT
Symmetry	EXCELLENT
Fluorescence	NONE
Inscription(s)	(16) LG620487521

Comments: This Laboratory Grown Diamond was created by Chemical Vapor Deposition (CVD) growth process and may include post-growth treatment.  
Type IIa



February 3, 2024	2.73 CARATS
IG Report No.IG02407821	H
ROUND BRILLIANT	VS 1
	IDEAL
	61%
	59%
	Medium to Slightly Thick (Faceted)
	Pointed
	EXCELLENT
	EXCELLENT
	NONE
	IG# LG02407821
95 - 8.99 X 5.68 MM	
Carat Weight	
Color Grade	
Clarity Grade	
Cut Grade	
Depth	
Table	
Girdle	
Culet	
Polish	
Symmetry	
Fluorescence	
Inscriptions(s)	
Comments:	
The Laboratory Grown Diamond was grown using High Pressure High Temperature (HPHT) growth process and may include post-growth treatment.	
Type IIG	