



ELECTRONIC COPY

LABORATORY GROWN DIAMOND REPORT

LG620487646

Report verification at igi.org

LABORATORY GROWN DIAMOND REPORT

LABORATORY GROWN DIAMOND REPORT

LABORATORY GROWN DIAMOND REPORT

February 3, 2024
IGI Report Number LG620487646
Description LABORATORY GROWN DIAMOND
Shape and Cutting Style ROUND BRILLIANT
Measurements 10.36 - 10.39 X 6.42 MM

GRADING RESULTS

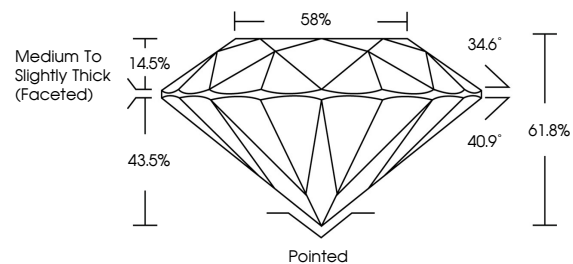
Carat Weight 4.26 CARATS
Color Grade H
Clarity Grade VS 1
Cut Grade IDEAL

ADDITIONAL GRADING INFORMATION

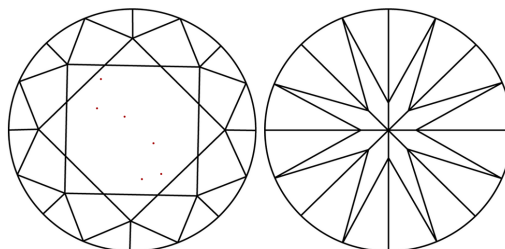
Polish EXCELLENT
Symmetry EXCELLENT
Fluorescence NONE
Inscription(s) IGI LG620487646

Comments: This Laboratory Grown Diamond was created by Chemical Vapor Deposition (CVD) growth process and may include post-growth treatment. Type IIa

PROPORTIONS



CLARITY CHARACTERISTICS



KEY TO SYMBOLS

Red symbols indicate internal characteristics.
Green symbols indicate external characteristics.

GRADING SCALES

CLARITY

Table mapping clarity grades (IF, VVS 1-2, VS 1-2, SI 1-2, I 1-3) to internal characteristics (Internally Flawless, Very Very Slightly Included, Very Slightly Included, Slightly Included, Included).

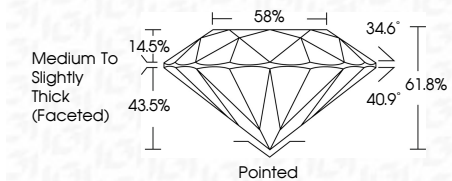
COLOR

Table mapping color grades (D, E, F, G, H, I, J, Faint, Very Light, Light).



Sample Image Used

February 3, 2024
IGI Report Number LG620487646
Description LABORATORY GROWN DIAMOND
Shape and Cutting Style ROUND BRILLIANT
Measurements 10.36 - 10.39 X 6.42 MM
GRADING RESULTS
Carat Weight 4.26 CARATS
Color Grade H
Clarity Grade VS 1
Cut Grade IDEAL



ADDITIONAL GRADING INFORMATION

Polish EXCELLENT
Symmetry EXCELLENT
Fluorescence NONE
Inscription(s) IGI LG620487646
Comments: This Laboratory Grown Diamond was created by Chemical Vapor Deposition (CVD) growth process and may include post-growth treatment. Type IIa



Summary table of report details: February 3, 2024, IGI Report No LG620487646, ROUND BRILLIANT, 10.36 - 10.39 X 6.42 MM, 4.26 CARATS, H, VS 1, IDEAL, 61.8%, 58%, Medium To Slightly Thick (Faceted), Pointed, EXCELLENT, EXCELLENT, NONE, IGI LG620487646.

Comments: This Laboratory Grown Diamond was created by Chemical Vapor Deposition (CVD) growth process and may include post-growth treatment. Type IIa