



ELECTRONIC COPY

LG620491553

Report verification at igi.org

LABORATORY GROWN DIAMOND REPORT

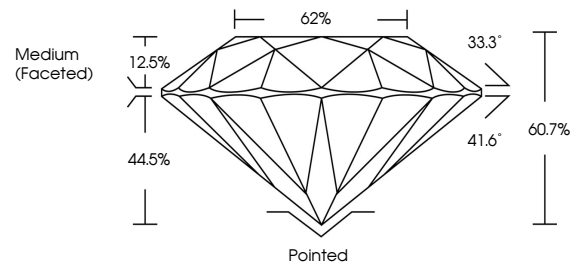
February 7, 2024
 IGI Report Number **LG620491553**
 Description **LABORATORY GROWN
DIAMOND**
 Shape and Cutting Style **ROUND BRILLIANT**
 Measurements **7.40 - 7.46 X 4.51 MM**
GRADING RESULTS
 Carat Weight **1.53 CARAT**
 Color Grade **H**
 Clarity Grade **VS 2**
 Cut Grade **EXCELLENT**

ADDITIONAL GRADING INFORMATION

Polish **EXCELLENT**
 Symmetry **EXCELLENT**
 Fluorescence **NONE**
 Inscription(s) **LG620491553**

Comments: This Laboratory Grown Diamond was created by Chemical Vapor Deposition (CVD) growth process and may include post-growth treatment. Type IIa

PROPORTIONS



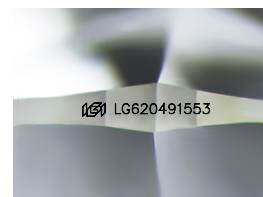
GRADING SCALES

CLARITY

| IF | VVS ¹⁻² | VS ¹⁻² | SI ¹⁻² | I ¹⁻³ |
|---------------------|-----------------------------|------------------------|-------------------|------------------|
| Internally Flawless | Very Very Slightly Included | Very Slightly Included | Slightly Included | Included |

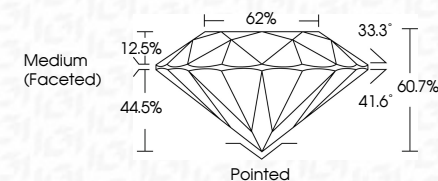
COLOR

| D | E | F | G | H | I | J | Faint | Very Light | Light |
|---|---|---|---|---|---|---|-------|------------|-------|
|---|---|---|---|---|---|---|-------|------------|-------|



Sample Image Used

February 7, 2024
 IGI Report Number **LG620491553**
 Description **LABORATORY GROWN
DIAMOND**
 Shape and Cutting Style **ROUND BRILLIANT**
 Measurements **7.40 - 7.46 X 4.51 MM**
GRADING RESULTS
 Carat Weight **1.53 CARAT**
 Color Grade **H**
 Clarity Grade **VS 2**
 Cut Grade **EXCELLENT**



ADDITIONAL GRADING INFORMATION

Polish **EXCELLENT**
 Symmetry **EXCELLENT**
 Fluorescence **NONE**
 Inscription(s) **LG620491553**
 Comments: This Laboratory Grown Diamond was created by Chemical Vapor Deposition (CVD) growth process and may include post-growth treatment. Type IIa



IGI



| | | | | | | | |
|---------------------------|--------------|---------------|---------------|-----------|-------|------------------|----------------|
| February 7, 2024 | 1.53 CARAT | H | VS 2 | EXCELLENT | 62% | Medium (Faceted) | Pointed |
| IGI Report No LG620491553 | 1.53 CARAT | H | VS 2 | EXCELLENT | 60.7% | Medium (Faceted) | EXCELLENT |
| ROUND BRILLIANT | Carat Weight | Color Grade | Clarity Grade | Cut Grade | Depth | Girdle | Polish |
| 7.40 - 7.46 X 4.51 MM | 1.53 CARAT | H | VS 2 | EXCELLENT | 60.7% | Medium (Faceted) | EXCELLENT |
| | Color Grade | Clarity Grade | Cut Grade | Depth | Table | Girdle | Symmetry |
| | H | VS 2 | EXCELLENT | 60.7% | 62% | Medium (Faceted) | EXCELLENT |
| | | | | | | | Fluorescence |
| | | | | | | | NONE |
| | | | | | | | Inscription(s) |
| | | | | | | | LG620491553 |

Comments: This Laboratory Grown Diamond was created by Chemical Vapor Deposition (CVD) growth process and may include post-growth treatment. Type IIa