



ELECTRONIC COPY

LABORATORY GROWN DIAMOND REPORT

February 7, 2024
 IGI Report Number **LG620491678**
 Description **LABORATORY GROWN
DIAMOND**
 Shape and Cutting Style **ROUND BRILLIANT**
 Measurements **9.77 - 9.83 X 5.96 MM**
GRADING RESULTS
 Carat Weight **3.54 CARATS**
 Color Grade **G**
 Clarity Grade **VS 2**
 Cut Grade **EXCELLENT**

ADDITIONAL GRADING INFORMATION

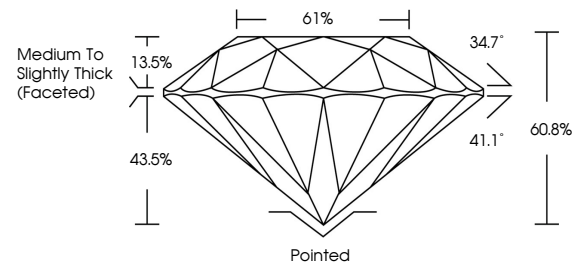
Polish **EXCELLENT**
 Symmetry **EXCELLENT**
 Fluorescence **NONE**
 Inscription(s) **IGI LG620491678**

Comments: This Laboratory Grown Diamond was created by Chemical Vapor Deposition (CVD) growth process and may include post-growth treatment. Type IIa

LG620491678

Report verification at igi.org

PROPORTIONS



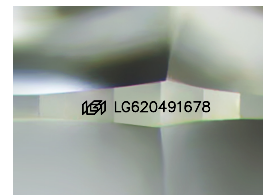
GRADING SCALES

CLARITY

IF	VVS ¹⁻²	VS ¹⁻²	SI ¹⁻²	I ¹⁻³
Internally Flawless	Very Very Slightly Included	Very Slightly Included	Slightly Included	Included

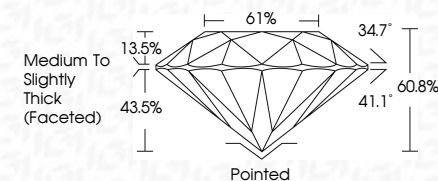
COLOR

D	E	F	G	H	I	J	Faint	Very Light	Light
---	---	---	---	---	---	---	-------	------------	-------



Sample Image Used

February 7, 2024
 IGI Report Number **LG620491678**
 Description **LABORATORY GROWN
DIAMOND**
 Shape and Cutting Style **ROUND BRILLIANT**
 Measurements **9.77 - 9.83 X 5.96 MM**
GRADING RESULTS
 Carat Weight **3.54 CARATS**
 Color Grade **G**
 Clarity Grade **VS 2**
 Cut Grade **EXCELLENT**



ADDITIONAL GRADING INFORMATION

Polish **EXCELLENT**
 Symmetry **EXCELLENT**
 Fluorescence **NONE**
 Inscription(s) **IGI LG620491678**
 Comments: This Laboratory Grown Diamond was created by Chemical Vapor Deposition (CVD) growth process and may include post-growth treatment. Type IIa



February 7, 2024	IGI Report No LG620491678	3.54 CARATS	G	VS 2	EXCELLENT	60.8%	61%	Pointed	EXCELLENT	EXCELLENT	NONE	IGI LG620491678
ROUND BRILLIANT	9.77 - 9.83 X 5.96 MM	Carat Weight	Color Grade	Clarity Grade	Cut Grade	Depth	Table	Medium To Slightly Thick (Faceted)	Polish	Symmetry	Fluorescence	Inscription(s)

Comments: This Laboratory Grown Diamond was created by Chemical Vapor Deposition (CVD) growth process and may include post-growth treatment. Type IIa