



ELECTRONIC COPY

LABORATORY GROWN DIAMOND REPORT

LG621403678

Report verification at igi.org

**LABORATORY GROWN
DIAMOND REPORT**

LABORATORY GROWN DIAMOND REPORT

LABORATORY GROWN DIAMOND REPORT

February 12, 2024
 IGI Report Number **LG621403678**
 Description **LABORATORY GROWN
DIAMOND**
 Shape and Cutting Style **ROUND BRILLIANT**
 Measurements **9.38 - 9.42 X 5.72 MM**

GRADING RESULTS

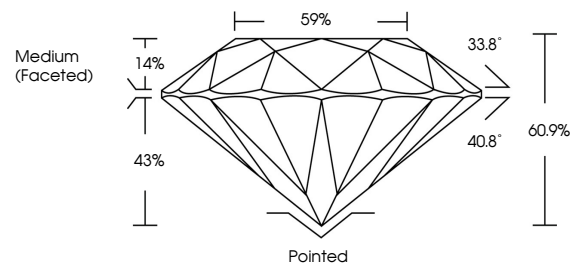
Carat Weight **3.14 CARATS**
 Color Grade **G**
 Clarity Grade **VS 1**
 Cut Grade **IDEAL**

ADDITIONAL GRADING INFORMATION

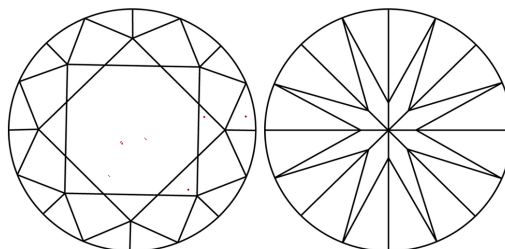
Polish **EXCELLENT**
 Symmetry **EXCELLENT**
 Fluorescence **NONE**
 Inscription(s) **IGI LG621403678**

Comments: This Laboratory Grown Diamond was created by Chemical Vapor Deposition (CVD) growth process and may include post-growth treatment. Type IIa

PROPORTIONS



CLARITY CHARACTERISTICS



KEY TO SYMBOLS

Red symbols indicate internal characteristics.
 Green symbols indicate external characteristics.

GRADING SCALES

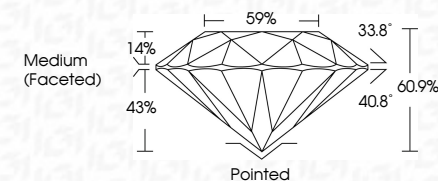
CLARITY

| IF | VVS ¹⁻² | VS ¹⁻² | SI ¹⁻² | I ¹⁻³ |
|---------------------|-----------------------------|------------------------|-------------------|------------------|
| Internally Flawless | Very Very Slightly Included | Very Slightly Included | Slightly Included | Included |

COLOR

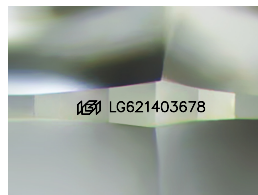
| D | E | F | G | H | I | J | Faint | Very Light | Light |
|---|---|---|---|---|---|---|-------|------------|-------|
|---|---|---|---|---|---|---|-------|------------|-------|

February 12, 2024
 IGI Report Number **LG621403678**
 Description **LABORATORY GROWN
DIAMOND**
 Shape and Cutting Style **ROUND BRILLIANT**
 Measurements **9.38 - 9.42 X 5.72 MM**
GRADING RESULTS
 Carat Weight **3.14 CARATS**
 Color Grade **G**
 Clarity Grade **VS 1**
 Cut Grade **IDEAL**



ADDITIONAL GRADING INFORMATION

Polish **EXCELLENT**
 Symmetry **EXCELLENT**
 Fluorescence **NONE**
 Inscription(s) **IGI LG621403678**
 Comments: This Laboratory Grown Diamond was created by Chemical Vapor Deposition (CVD) growth process and may include post-growth treatment. Type IIa



Sample Image Used



| | | | | | | | | | | | | | |
|-------------------|---------------------------|---------------|-----------|-------|-------|--------|-------|------------------|----------|--------------|----------------|---|-----------------|
| February 12, 2024 | IGI Report No LG621403678 | 3.14 CARATS | G | VS 1 | IDEAL | 60.9% | 59% | Medium (Faceted) | Pointed | EXCELLENT | EXCELLENT | NONE | IGI LG621403678 |
| Carat Weight | Color Grade | Clarity Grade | Cut Grade | Depth | Table | Girdle | Culet | Polish | Symmetry | Fluorescence | Inscription(s) | Comments: This Laboratory Grown Diamond was created by Chemical Vapor Deposition (CVD) growth process and may include post-growth treatment. Type IIa | |