

**ELECTRONIC COPY**

## LABORATORY GROWN DIAMOND REPORT

|                         |                             |
|-------------------------|-----------------------------|
| February 15, 2024       |                             |
| IGI Report Number       | LG621411272                 |
| Description             | LABORATORY GROWN<br>DIAMOND |
| Shape and Cutting Style | ROUND BRILLIANT             |
| Measurements            | 7.65 - 7.68 X 4.75 MM       |

## GRADING RESULTS

|               |            |
|---------------|------------|
| Carat Weight  | 1.72 CARAT |
| Color Grade   | F          |
| Clarity Grade | VS 2       |
| Cut Grade     | IDEAL      |

### ADDITIONAL GRADING INFORMATION

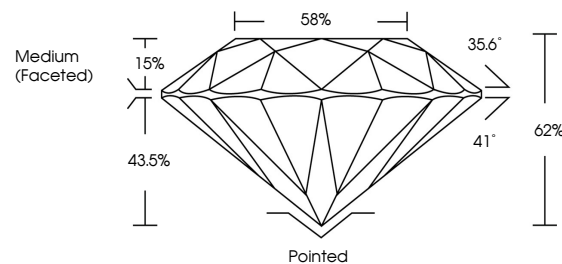
|                |   |
|----------------|---|
| Polish         | EXCELLENT   |
| Symmetry       | EXCELLENT   |
| Fluorescence   | NONE  |
| Inscription(s) |  LG621411272 |

Comments: HEARTS & ARROWS  
This Laboratory Grown Diamond was created by  
Chemical Vapor Deposition (CVD) growth process and  
may include post-growth treatment.  
Type IIa

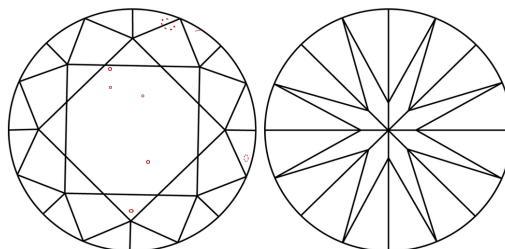
## LABORATORY GROWN DIAMOND REPORT

LG621411272  
Report verification at lqi.org

## PROPORTIONS

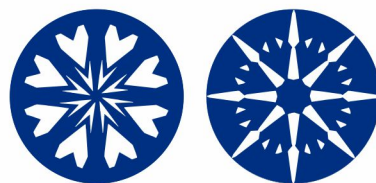


## CLARITY CHARACTERISTICS



### KEY TO SYMBOLS

Red symbols indicate internal characteristics.  
Green symbols indicate external characteristics.



**www.igi.org**

LABORATORY GROWN  
DIAMOND REPORT

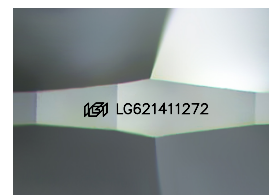
## GRADING SCALES

## CLARITY

| IF                     | VVS <sup>1-2</sup>             | VS <sup>1-2</sup>         | SI <sup>1-2</sup>    | I <sup>1-3</sup> |
|------------------------|--------------------------------|---------------------------|----------------------|------------------|
| Internally<br>Flawless | Very Very<br>Slightly Included | Very<br>Slightly Included | Slightly<br>Included | Included         |

**COLOR**

D E F G H I J Faint Very Light Light



Sample Image Used



© IGI 2020, International Gemological Institute

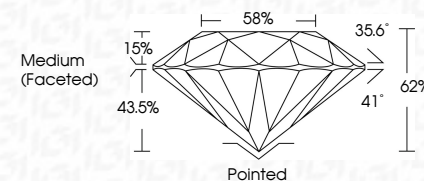
FD - 10 20

THIS DOCUMENT WAS PRODUCED WITH THE FOLLOWING SECURITY MEASURES: SPECIAL DOCUMENT PAPER, INK SCREENS, WATERMARK, BACKGROUND DESIGNS, HOLOGRAM AND OTHER SECURITY FEATURES NOT LISTED AND DO EXCEED DOCUMENT SECURITY INDUSTRY GUIDELINES

## LABORATORY GROWN DIAMOND REPORT

|                         |                             |
|-------------------------|-----------------------------|
| February 15, 2024       |                             |
| IGI Report Number       | LG621411272                 |
| Description             | LABORATORY GROWN<br>DIAMOND |
| Shape and Cutting Style | ROUND BRILLIANT             |
| Measurements            | 7.65 - 7.68 X 4.75 MM       |

| GRADING RESULTS |            |
|-----------------|------------|
| Carat Weight    | 1.72 CARAT |
| Color Grade     | F          |
| Clarity Grade   | VS 2       |
| Cut Grade       | IDEAL      |



### ADDITIONAL GRADING INFORMATION

|  |   |
|--|---|
| Polish   | EXCELLENT   |
| Symmetry   | EXCELLENT   |
| Fluorescence   | NONE  |
| Inscription(s)   |  LG621411272 |
| Comments: HEARTS & ARROWS  |   |
| This Laboratory Grown Diamond was created by Chemical Vapor Deposition (CVD) growth process and may include post-growth treatment. |   |
| Type IIA   |   |



IG

[illegible]