



**INTERNATIONAL
GEMOLOGICAL
INSTITUTE**

ELECTRONIC COPY

**LABORATORY GROWN
DIAMOND REPORT**

LG621413546

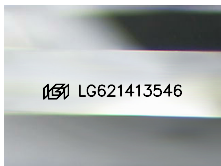
**IGI LABORATORY GROWN
DIAMOND ID REPORT**

February 18, 2024
IGI Report Number **LG621413546**
**CUT CORNERED RECTANGULAR
MODIFIED BRILLIANT**
5.94 X 3.84 X 2.70 MM

LABORATORY GROWN DIAMOND REPORT

IGI LABORATORY GROWN DIAMOND IDENTIFICATION REPORT

February 18, 2024
IGI Report Number **LG621413546**
Description **LABORATORY GROWN DIAMOND**
Shape and Cutting Style **CUT CORNERED RECTANGULAR MODIFIED
BRILLIANT**
Measurements **5.94 X 3.84 X 2.70 MM**



Sample Image Used

GRADING RESULTS

Carat Weight **0.53 CARAT**
Color Grade **E**
Clarity Grade **VS 1**

ADDITIONAL GRADING INFORMATION

Polish **EXCELLENT**
Symmetry **EXCELLENT**
Fluorescence **NONE**
Inscription(s) **IGI LG621413546**

Comments: This Laboratory Grown Diamond was created by Chemical Vapor Deposition (CVD) growth process and may include post-growth treatment. Type IIa

Carat Weight **0.53 CARAT**
Color Grade **E**
Clarity Grade **VS 1**
Polish **EXCELLENT**
Symmetry **EXCELLENT**
Fluorescence **NONE**
Inscription(s) **IGI LG621413546**

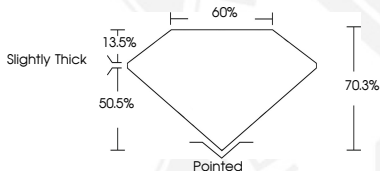
Comments: This Laboratory Grown Diamond was created by Chemical Vapor Deposition (CVD) growth process and may include post-growth treatment. Type IIa

**IGI LABORATORY GROWN
DIAMOND ID REPORT**

February 18, 2024
IGI Report Number **LG621413546**
**CUT CORNERED RECTANGULAR
MODIFIED BRILLIANT**
5.94 X 3.84 X 2.70 MM

Carat Weight **0.53 CARAT**
Color Grade **E**
Clarity Grade **VS 1**
Polish **EXCELLENT**
Symmetry **EXCELLENT**
Fluorescence **NONE**
Inscription(s) **IGI LG621413546**

Comments: This Laboratory Grown Diamond was created by Chemical Vapor Deposition (CVD) growth process and may include post-growth treatment. Type IIa



THIS DOCUMENT WAS PRODUCED WITH THE FOLLOWING SECURITY MEASURES: SPECIAL DOCUMENT PAPER, INK SCREENS, WATERMARK, BACKGROUND DESIGN, HOLOGRAM AND OTHER SECURITY FEATURES NOT LISTED AND DO EXCEED DOCUMENT SECURITY INDUSTRY GUIDELINES.

For terms & conditions and to verify this report, please visit www.igi.org