



## LABORATORY GROWN DIAMOND REPORT

February 13, 2024	
IGI Report Number	LG621417379
Description	LABORATORY GROWN DIAMOND
Shape and Cutting Style	CUT CORNERED RECTANGULAR MODIFIED BRILLIANT
Measurements	7.11 X 5.28 X 3.38 MM

### ADDITIONAL GRADING INFORMATION

Polish	EXCELLENT
Symmetry	EXCELLENT
Fluorescence	NONE
Inscription(s)	 LG621417379

Comments: This Laboratory Grown Diamond was created by Chemical Vapor Deposition (CVD) growth process and may include post-growth treatment.  
Type IIa

LABORATORY GROWN DIAMOND REPORT

LG621417379

Report verification at [igi.org](https://www.igi.org)

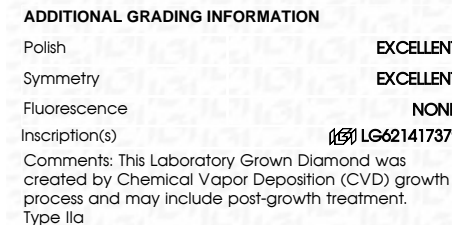
## PROPORTIONS

## CLARITY CHARACTERISTICS

### KEY TO SYMBOLS

THIS DOCUMENT WAS PRODUCED WITH THE FOLLOWING SECURITY MEASURES: SPECIAL DOCUMENT PAPER, INK SCREENS, WATERMARK BACKGROUND DESIGNS, HOLOGRAM AND OTHER SECURITY FEATURES NOT LISTED AND DO EXCEED DOCUMENT SECURITY INDUSTRY GUIDELINES.

February 13, 2024	
IGI Report Number	LG621417379
Description	LABORATORY GROWN DIAMOND
Shape and Cutting Style	CUT CORNERED RECTANGULAR MODIFIED BRILLIANT
Measurements	7.11 X 5.28 X 3.38 MM
<b>GRADING RESULTS</b>	
Carat Weight	1.07 CARAT
Color Grade	E
Clarity Grade	VS 1



February 13, 2024	GI Report No LG521417379	1.07 CARAT
1.11 X 5.28 X 3.38 MM	Color Grade	Vs 1
CUT CORNERED RECT. MODIFIED BRILLIANT	Clarity Grade	6%
	Depth	70%
	Table	Medium to Slightly Thick
	Girdle	Polished
	Culet	EXCELLENT
	Polish	EXCELLENT
	Symmetry	NONE
	Fluorescence	lgsl LG521417379
	Inscriptions(s)	

Comments: This is a Very Good Growth Diamond was treated by Chemical Vapor Deposition (CVD) growth process and may include post-growth treatment.

Type Ila