



**ELECTRONIC COPY**

**LABORATORY GROWN DIAMOND REPORT**

February 20, 2024  
 IGI Report Number **LG621420411**  
 Description **LABORATORY GROWN  
DIAMOND**  
 Shape and Cutting Style **ROUND BRILLIANT**  
 Measurements **8.76 - 8.82 X 5.31 MM**

**GRADING RESULTS**

Carat Weight **2.55 CARATS**  
 Color Grade **E**  
 Clarity Grade **VS 2**  
 Cut Grade **IDEAL**

**ADDITIONAL GRADING INFORMATION**

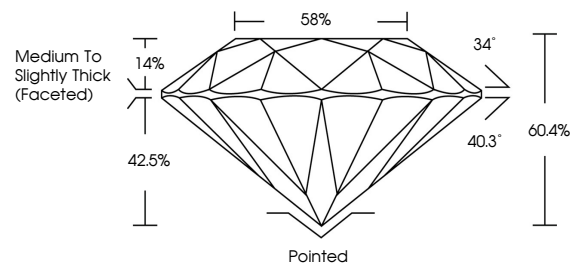
Polish **EXCELLENT**  
 Symmetry **EXCELLENT**  
 Fluorescence **NONE**  
 Inscription(s) **IGI LG621420411**

Comments: This Laboratory Grown Diamond was created by Chemical Vapor Deposition (CVD) growth process and may include post-growth treatment. Type IIa

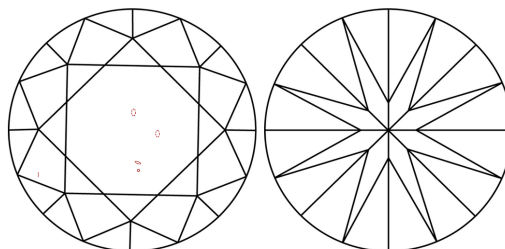
**LABORATORY GROWN DIAMOND REPORT**

**LG621420411**  
 Report verification at [igi.org](http://igi.org)

**PROPORTIONS**



**CLARITY CHARACTERISTICS**



**KEY TO SYMBOLS**

Red symbols indicate internal characteristics.  
 Green symbols indicate external characteristics.

**LABORATORY GROWN  
DIAMOND REPORT**

**GRADING SCALES**

**CLARITY**

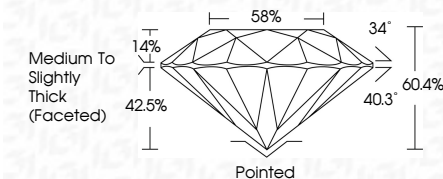
IF	VVS <sup>1-2</sup>	VS <sup>1-2</sup>	SI <sup>1-2</sup>	I <sup>1-3</sup>
Internally Flawless	Very Very Slightly Included	Very Slightly Included	Slightly Included	Included

**COLOR**

D	E	F	G	H	I	J	Faint	Very Light	Light
---	---	---	---	---	---	---	-------	------------	-------

**LABORATORY GROWN DIAMOND REPORT**

February 20, 2024  
 IGI Report Number **LG621420411**  
 Description **LABORATORY GROWN  
DIAMOND**  
 Shape and Cutting Style **ROUND BRILLIANT**  
 Measurements **8.76 - 8.82 X 5.31 MM**  
**GRADING RESULTS**  
 Carat Weight **2.55 CARATS**  
 Color Grade **E**  
 Clarity Grade **VS 2**  
 Cut Grade **IDEAL**



**ADDITIONAL GRADING INFORMATION**

Polish **EXCELLENT**  
 Symmetry **EXCELLENT**  
 Fluorescence **NONE**  
 Inscription(s) **IGI LG621420411**  
 Comments: This Laboratory Grown Diamond was created by Chemical Vapor Deposition (CVD) growth process and may include post-growth treatment. Type IIa



Sample Image Used



**IGI**

February 20, 2024  
 IGI Report No LG621420411  
**ROUND BRILLIANT**  
 8.76 - 8.82 X 5.31 MM  
 Carat Weight **2.55 CARATS**  
 Color Grade **E**  
 Clarity Grade **VS 2**  
 Cut Grade **IDEAL**  
 Depth **60.4%**  
 Table **58%**  
 Girdle **Medium To Slightly Thick (Faceted)**  
 Culet **Pointed**  
 Polish **EXCELLENT**  
 Symmetry **EXCELLENT**  
 Fluorescence **NONE**  
 Inscription(s) **IGI LG621420411**  
 Comments: This Laboratory Grown Diamond was created by Chemical Vapor Deposition (CVD) growth process and may include post-growth treatment. Type IIa