



**ELECTRONIC COPY**

LG621440066  
Report verification at [igi.org](http://igi.org)

**LABORATORY GROWN DIAMOND REPORT**

March 5, 2024  
IGI Report Number **LG621440066**  
Description **LABORATORY GROWN  
DIAMOND**  
Shape and Cutting Style **ROUND BRILLIANT**  
Measurements **7.67 - 7.71 X 4.75 MM**

**GRADING RESULTS**

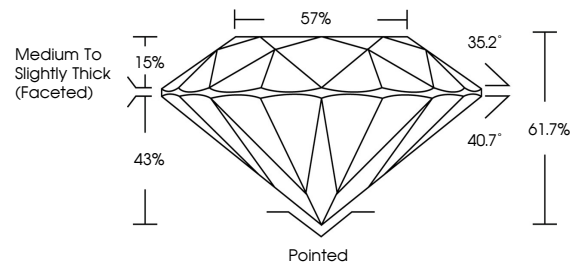
Carat Weight **1.73 CARAT**  
Color Grade **D**  
Clarity Grade **VS 2**  
Cut Grade **IDEAL**

**ADDITIONAL GRADING INFORMATION**

Polish **EXCELLENT**  
Symmetry **EXCELLENT**  
Fluorescence **NONE**  
Inscription(s) **IGI LG621440066**

Comments: This Laboratory Grown Diamond was created by Chemical Vapor Deposition (CVD) growth process and may include post-growth treatment. Type IIa

**PROPORTIONS**



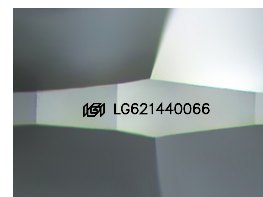
**GRADING SCALES**

**CLARITY**

IF	VVS <sup>1-2</sup>	VS <sup>1-2</sup>	SI <sup>1-2</sup>	I <sup>1-3</sup>
Internally Flawless	Very Very Slightly Included	Very Slightly Included	Slightly Included	Included

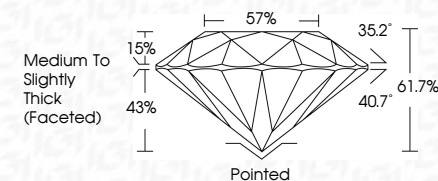
**COLOR**

D	E	F	G	H	I	J	Faint	Very Light	Light
---	---	---	---	---	---	---	-------	------------	-------



Sample Image Used

March 5, 2024  
IGI Report Number **LG621440066**  
Description **LABORATORY GROWN  
DIAMOND**  
Shape and Cutting Style **ROUND BRILLIANT**  
Measurements **7.67 - 7.71 X 4.75 MM**  
**GRADING RESULTS**  
Carat Weight **1.73 CARAT**  
Color Grade **D**  
Clarity Grade **VS 2**  
Cut Grade **IDEAL**



**ADDITIONAL GRADING INFORMATION**

Polish **EXCELLENT**  
Symmetry **EXCELLENT**  
Fluorescence **NONE**  
Inscription(s) **IGI LG621440066**  
Comments: This Laboratory Grown Diamond was created by Chemical Vapor Deposition (CVD) growth process and may include post-growth treatment. Type IIa



March 5, 2024  
IGI Report No LG621440066  
ROUND BRILLIANT

7.67 - 7.71 X 4.75 MM

1.73 CARAT  
D

VS 2  
IDEAL

61.7%  
57%

Medium To Slightly Thick (Faceted)

Pointed  
EXCELLENT  
EXCELLENT  
NONE

IGI LG621440066

Comments: This Laboratory Grown Diamond was created by Chemical Vapor Deposition (CVD) growth process and may include post-growth treatment. Type IIa

