



ELECTRONIC COPY

LG621450029

Report verification at igi.org

LABORATORY GROWN DIAMOND REPORT

February 20, 2024
IGI Report Number LG621450029

Description LABORATORY GROWN DIAMOND

Shape and Cutting Style EMERALD CUT

Measurements 9.37 X 6.42 X 4.14 MM

GRADING RESULTS

Carat Weight 2.53 CARATS

Color Grade D

Clarity Grade VS 1

ADDITIONAL GRADING INFORMATION

Polish EXCELLENT

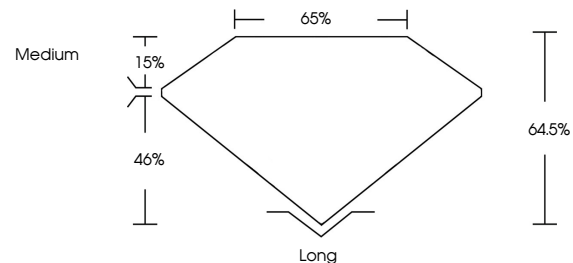
Symmetry EXCELLENT

Fluorescence NONE

Inscription(s) IGI LG621450029

Comments: This Laboratory Grown Diamond was created by Chemical Vapor Deposition (CVD) growth process and may include post-growth treatment. Type IIa

PROPORTIONS



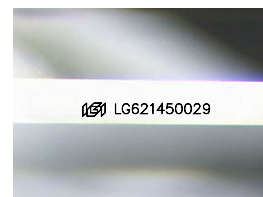
GRADING SCALES

CLARITY

Table with 5 columns: IF, VVS 1-2, VS 1-2, SI 1-2, I 1-3. Rows: Internally Flawless, Very Very Slightly Included, Very Slightly Included, Slightly Included, Included.

COLOR

Table with 11 columns: D, E, F, G, H, I, J, Faint, Very Light, Light.



Sample Image Used

February 20, 2024

IGI Report Number LG621450029

Description LABORATORY GROWN DIAMOND

Shape and Cutting Style EMERALD CUT

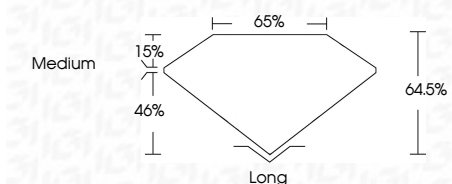
Measurements 9.37 X 6.42 X 4.14 MM

GRADING RESULTS

Carat Weight 2.53 CARATS

Color Grade D

Clarity Grade VS 1



ADDITIONAL GRADING INFORMATION

Polish EXCELLENT

Symmetry EXCELLENT

Fluorescence NONE

Inscription(s) IGI LG621450029

Comments: This Laboratory Grown Diamond was created by Chemical Vapor Deposition (CVD) growth process and may include post-growth treatment. Type IIa



IGI



Summary of diamond details including date, report number, measurements, carat weight, color grade, clarity grade, and grading results.

Comments: This Laboratory Grown Diamond was created by Chemical Vapor Deposition (CVD) growth process and may include post-growth treatment. Type IIa