



**INTERNATIONAL
GEMOLOGICAL
INSTITUTE**

ELECTRONIC COPY

**LABORATORY GROWN
DIAMOND REPORT**

LG621450953

**IGI LABORATORY GROWN
DIAMOND ID REPORT**

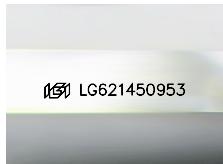
February 23, 2024
IGI Report Number **LG621450953**
EMERALD CUT
6.23 X 4.11 X 2.90 MM
Carat Weight 0.76 CARAT
Color Grade H
Clarity Grade VS 2
Polish EXCELLENT
Symmetry EXCELLENT
Fluorescence NONE
Inscription(s) LG621450953

Comments: This Laboratory Grown Diamond was created by Chemical Vapor Deposition (CVD) growth process and may include post-growth treatment. Type Iia

LABORATORY GROWN DIAMOND REPORT

IGI LABORATORY GROWN DIAMOND IDENTIFICATION REPORT

February 23, 2024
IGI Report Number LG621450953
Description LABORATORY GROWN DIAMOND
Shape and Cutting Style EMERALD CUT
Measurements 6.23 X 4.11 X 2.90 MM



Sample Image Used

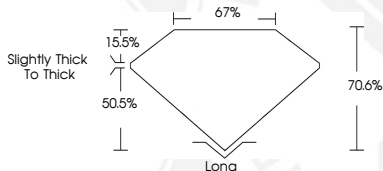
GRADING RESULTS

Carat Weight 0.76 CARAT
Color Grade H
Clarity Grade VS 2

ADDITIONAL GRADING INFORMATION

Polish EXCELLENT
Symmetry EXCELLENT
Fluorescence NONE
Inscription(s) LG621450953

Comments: This Laboratory Grown Diamond was created by Chemical Vapor Deposition (CVD) growth process and may include post-growth treatment. Type Iia



**IGI LABORATORY GROWN
DIAMOND ID REPORT**

February 23, 2024
IGI Report Number **LG621450953**
EMERALD CUT
6.23 X 4.11 X 2.90 MM
Carat Weight 0.76 CARAT
Color Grade H
Clarity Grade VS 2
Polish EXCELLENT
Symmetry EXCELLENT
Fluorescence NONE
Inscription(s) LG621450953

Comments: This Laboratory Grown Diamond was created by Chemical Vapor Deposition (CVD) growth process and may include post-growth treatment. Type Iia



THIS DOCUMENT WAS PRODUCED WITH THE FOLLOWING SECURITY MEASURES: SPECIAL DOCUMENT PAPER, INK SCREENS, WATERMARK, BACKGROUND DESIGN, HOLOGRAM AND OTHER SECURITY FEATURES NOT LISTED AND DO EXCEED DOCUMENT SECURITY INDUSTRY GUIDELINES.

For terms & conditions and to verify this report, please visit www.igi.org