



ELECTRONIC COPY

LABORATORY GROWN DIAMOND REPORT

February 16, 2024	
IGI Report Number	LG621451370
Description	LABORATORY GROWN DIAMOND
Shape and Cutting Style	OVAL BRILLIANT
Measurements	11.81 X 7.73 X 4.87 MM

GRADING RESULTS

Carat Weight	2.82 CARATS
Color Grade	FANCY VIVID BLUE
Clarity Grade	VS 2

ADDITIONAL GRADING INFORMATION

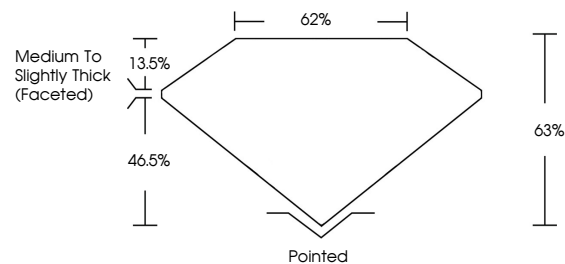
Polish	EXCELLENT
Symmetry	EXCELLENT
Fluorescence	NONE
Inscription(s)	 LG621451370

Comments: This Laboratory Grown Diamond was created by Chemical Vapor Deposition (CVD) growth process.
Indications of post-growth treatment.

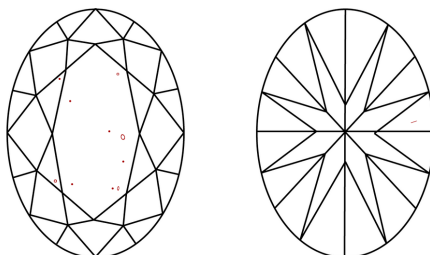
LABORATORY GROWN DIAMOND REPORT

LG621451370
Report verification at igi.org

PROPORTIONS



CLARITY CHARACTERISTICS



KEY TO SYMBOLS

Red symbols indicate internal characteristics.
Green symbols indicate external characteristics.

LABORATORY GROWN
DIAMOND REPORT

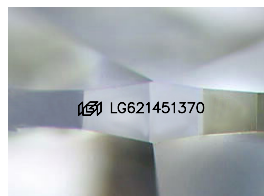
GRADING SCALES

CLARITY

IF	VVS ¹⁻²	VS ¹⁻²	SI ¹⁻²	I ¹⁻³
Internally Flawless	Very Very Slightly Included	Very Slightly Included	Slightly Included	Included

COLOR

D	E	F	G	H	I	J	Faint	Very Light	Light
Light Tint			Fancy Light		Fancy		Fancy Intense		Fancy Vivid



Sample Image Used

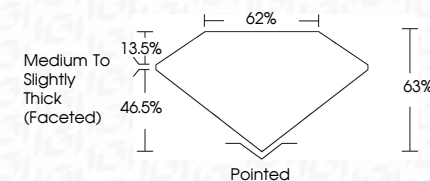


© IGI 2020, International Gemological Institute

FD - 10 20

LABORATORY GROWN DIAMOND REPORT

February 16, 2024	
IGI Report Number	LG621451370
Description	LABORATORY GROWN DIAMOND
Shape and Cutting Style	OVAL BRILLIANT
Measurements	11.81 X 7.73 X 4.87 MM
GRADING RESULTS	
Carat Weight	2.82 CARATS
Color Grade	FANCY VIVID BLUE
Clarity Grade	VS 2



ADDITIONAL GRADING INFORMATION

Polish	EXCELLENT
Symmetry	EXCELLENT
Fluorescence	NONE
Inscription(s)	 LG-621451370

Comments: This Laboratory Grown Diamond was created by Chemical Vapor Deposition (CVD) growth process.
Indications of post-growth treatment.



February 16, 2024	2.82 CARATS
GI Report No. LG201461370	FANCY VIVID BLUE
0.01 CARAT BRILLIANT	VS 2
1.01 X 7.73 X 4.87 MM	65%
	62%
	Medium to Slightly Thick Facetwork
	Pointed
	EXCELLENT
	EXCELLENT
	NONE
	681 LG201461370

Comments:

This Laboratory Grown Diamond was created by Chemical Vapor Deposition and shows no indications of post-growth treatment.