



LABORATORY GROWN DIAMOND REPORT

GRADING RESULTS

ADDITIONAL GRADING INFORMATION

Comments: HEARTS & ARROWS
This Laboratory Grown Diamond was created by
Chemical Vapor Deposition (CVD) growth process and
may include post-growth treatment.
Type IIa

LG621455473
Report verification at lgi.org

Medium (Faceted)

58%

14.5%

43.5%

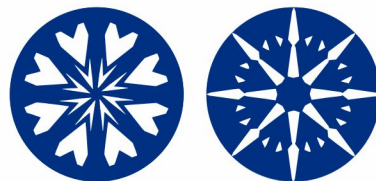
34.8°

41°

61.9%

Pointed

Red symbols indicate internal characteristics.
Green symbols indicate external characteristics.

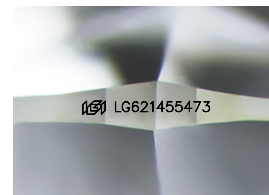


www.igi.org

GRADING SCALES

IF	VVS ¹⁻²	VS ¹⁻²	SI ¹⁻²	I ¹⁻³
Internally Flawless	Very Very Slightly Included	Very Slightly Included	Slightly Included	Included

D E F G H I J Faint Very Light Light



Sample Image Used

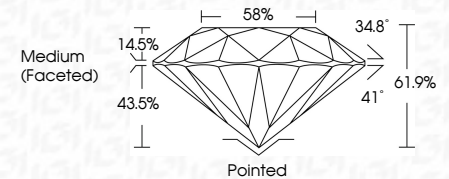


© IGI 2020, International Gemological Institute

FD - 10 20

THIS DOCUMENT WAS PRODUCED WITH THE FOLLOWING SECURITY MEASURES: SPECIAL DOCUMENT PAPER, INK SCREENS, WATERMARK, BACKGROUND DESIGNS, HOLOGRAM AND OTHER SECURITY FEATURES NOT LISTED AND DO EXCEED DOCUMENT SECURITY INDUSTRY GUIDELINES

GRADING RESULTS	
Carat Weight	1.71 CARAT
Color Grade	F
Clarity Grade	VS 2
Cut Grade	IDEAL



Polish	EXCELLENT
Symmetry	EXCELLENT
Fluorescence	NONE
Inscription(s)	 LG621455473
Comments: HEARTS & ARROWS	
This Laboratory Grown Diamond was created by Chemical Vapor Deposition (CVD) growth process and may include post-growth treatment.	
Type IIa	



IGI

February 24, 2024
IGI Report No LG621455473
ROUND BRILLIANT

1.71 CARAT	VS 2	Pointed
F	IDEAL	EXCELLENT
	61.9%	EXCELLENT
	58%	NONE
	Medium (Faceted)	

Pointed
EXCELLENT
EXCELLENT
NONE
621455473

Comments:
HEARTS & ARROWS
This Laboratory Grown Diamond was created by Chemical Vapor Deposition (CVD) growth process and may include post-growth treatment.