



ELECTRONIC COPY

LG621487621
Report verification at igi.org



April 13, 2024
IGI Report Number **LG621487621**
Description **LABORATORY GROWN DIAMOND**
Shape and Cutting Style **ROUND BRILLIANT**
Measurements **7.26 - 7.29 X 4.52 MM**
GRADING RESULTS
Carat Weight **1.52 CARAT**
Color Grade **D**
Clarity Grade **VS 1**
Cut Grade **VERY GOOD**

April 13, 2024
IGI Report Number **LG621487621**
Description **LABORATORY GROWN DIAMOND**
Shape and Cutting Style **ROUND BRILLIANT**
Measurements **7.26 - 7.29 X 4.52 MM**

GRADING RESULTS

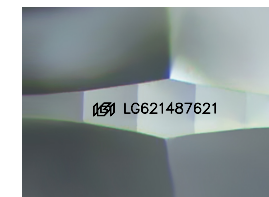
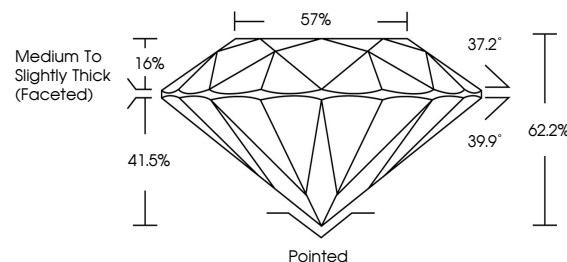
Carat Weight **1.52 CARAT**
Color Grade **D**
Clarity Grade **VS 1**
Cut Grade **VERY GOOD**

ADDITIONAL GRADING INFORMATION

Polish **EXCELLENT**
Symmetry **VERY GOOD**
Fluorescence **NONE**
Inscription(s) **IGI LG621487621**

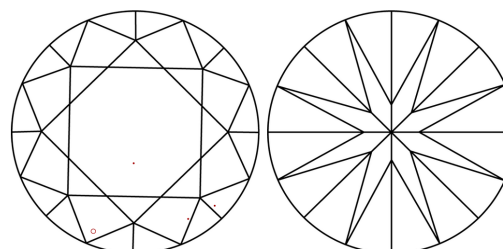
Comments: This Laboratory Grown Diamond was created by Chemical Vapor Deposition (CVD) growth process and may include post-growth treatment. Type IIa

PROPORTIONS



Sample Image Used

CLARITY CHARACTERISTICS



KEY TO SYMBOLS

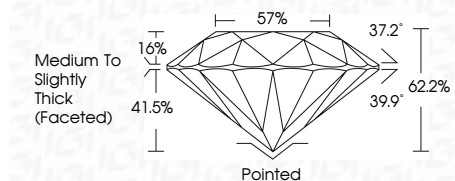
Red symbols indicate internal characteristics.
Green symbols indicate external characteristics.

COLOR

D E F G H I J Faint Very Light Light

CLARITY

IF	VS ¹⁻²	VS ¹⁻²	SI ¹⁻²	I ¹⁻³
Internally Flawless	Very Very Slightly Included	Very Slightly Included	Slightly Included	Included



ADDITIONAL GRADING INFORMATION

Polish **EXCELLENT**
Symmetry **VERY GOOD**
Fluorescence **NONE**
Inscription(s) **IGI LG621487621**
Comments: This Laboratory Grown Diamond was created by Chemical Vapor Deposition (CVD) growth process and may include post-growth treatment. Type IIa



IGI



April 13, 2024
IGI Report No LG621487621
ROUND BRILLIANT
7.26 - 7.29 X 4.52 MM
1.52 CARAT
D
Color Grade **VERY GOOD**
VS 1
Depth 62.2%
Table 57%
Girdle Medium To Slightly Thick (Faceted)
Culet Pointed
Polish EXCELLENT
Symmetry VERY GOOD
Fluorescence NONE
Inscription(s) IGI LG621487621
Comments: This Laboratory Grown Diamond was created by Chemical Vapor Deposition (CVD) growth process and may include post-growth treatment. Type IIa