



ELECTRONIC COPY

LG621488120
Report verification at igi.org



May 3, 2024

IGI Report Number **LG621488120**

Description **LABORATORY GROWN DIAMOND**

Shape and Cutting Style **EMERALD CUT**

Measurements **7.03 X 4.71 X 3.14 MM**

GRADING RESULTS

Carat Weight **1.10 CARAT**

Color Grade **F**

Clarity Grade **VS 1**

May 3, 2024

IGI Report Number **LG621488120**

Description **LABORATORY GROWN DIAMOND**

Shape and Cutting Style **EMERALD CUT**

Measurements **7.03 X 4.71 X 3.14 MM**

GRADING RESULTS

Carat Weight **1.10 CARAT**

Color Grade **F**

Clarity Grade **VS 1**

ADDITIONAL GRADING INFORMATION

Polish **VERY GOOD**

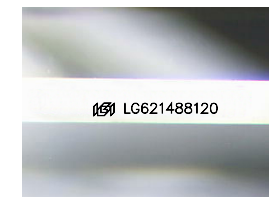
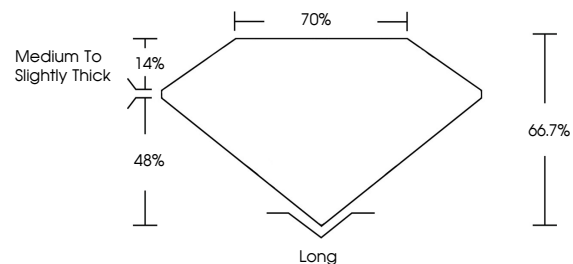
Symmetry **VERY GOOD**

Fluorescence **NONE**

Inscription(s) **IGI LG621488120**

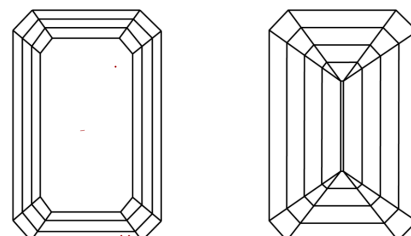
Comments: This Laboratory Grown Diamond was created by Chemical Vapor Deposition (CVD) growth process and may include post-growth treatment. Type IIa

PROPORTIONS



Sample Image Used

CLARITY CHARACTERISTICS



KEY TO SYMBOLS

Red symbols indicate internal characteristics.
Green symbols indicate external characteristics.

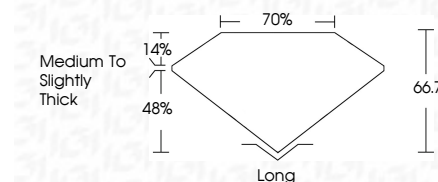
COLOR

D E F G H I J Faint Very Light Light

CLARITY

IF VS¹⁻² VS¹⁻² SI¹⁻² I¹⁻³

Internally Flawless Very Very Slightly Included Very Slightly Included Slightly Included Included



ADDITIONAL GRADING INFORMATION

Polish **VERY GOOD**

Symmetry **VERY GOOD**

Fluorescence **NONE**

Inscription(s) **IGI LG621488120**

Comments: This Laboratory Grown Diamond was created by Chemical Vapor Deposition (CVD) growth process and may include post-growth treatment. Type IIa



IGI

May 3, 2024
IGI Report No. LG621488120
EMERALD CUT

7.03 X 4.71 X 3.14 MM

Carat Weight **1.10 CARAT**

Color Grade **F**

Clarity Grade **VS 1**

Depth **48%**

Table **14%**

Girdle **Medium to Slightly Thick**

Culet **Long**

Polish **VERY GOOD**

Symmetry **VERY GOOD**

Fluorescence **NONE**

Inscription(s) **IGI LG621488120**

Comments: This Laboratory Grown Diamond was created by Chemical Vapor Deposition (CVD) growth process and may include post-growth treatment. Type IIa