



**ELECTRONIC COPY**

LG621488279  
Report verification at igi.org



May 6, 2024  
IGI Report Number **LG621488279**  
Description **LABORATORY GROWN DIAMOND**  
Shape and Cutting Style **PRINCESS CUT**  
Measurements **6.33 X 6.16 X 4.49 MM**  
**GRADING RESULTS**  
Carat Weight **1.57 CARAT**  
Color Grade **J**  
Clarity Grade **VVS 2**

May 6, 2024  
IGI Report Number **LG621488279**  
Description **LABORATORY GROWN DIAMOND**  
Shape and Cutting Style **PRINCESS CUT**  
Measurements **6.33 X 6.16 X 4.49 MM**

**GRADING RESULTS**

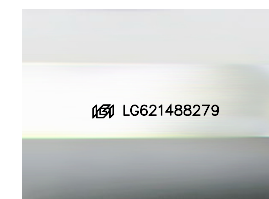
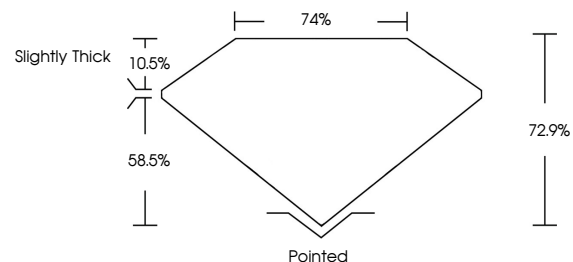
Carat Weight **1.57 CARAT**  
Color Grade **J**  
Clarity Grade **VVS 2**

**ADDITIONAL GRADING INFORMATION**

Polish **VERY GOOD**  
Symmetry **VERY GOOD**  
Fluorescence **NONE**  
Inscription(s) **IGI LG621488279**

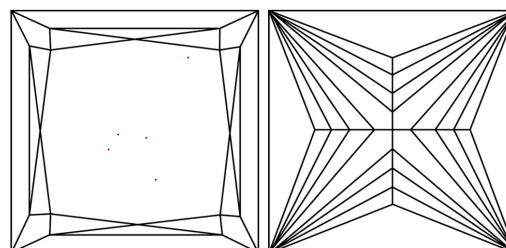
Comments: This Laboratory Grown Diamond was created by Chemical Vapor Deposition (CVD) growth process and may include post-growth treatment. Type IIa

**PROPORTIONS**



Sample Image Used

**CLARITY CHARACTERISTICS**



**KEY TO SYMBOLS**

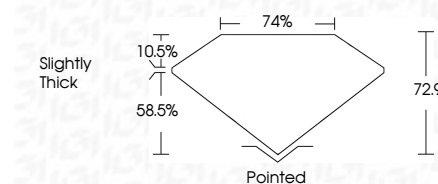
Red symbols indicate internal characteristics.  
Green symbols indicate external characteristics.

**COLOR**

D E F G H I J Faint Very Light Light

**CLARITY**

IF	VS <sup>1-2</sup>	VS <sup>1-2</sup>	SI <sup>1-2</sup>	I <sup>1-3</sup>
Internally Flawless	Very Very Slightly Included	Very Slightly Included	Slightly Included	Included



**ADDITIONAL GRADING INFORMATION**

Polish **VERY GOOD**  
Symmetry **VERY GOOD**  
Fluorescence **NONE**  
Inscription(s) **IGI LG621488279**  
Comments: This Laboratory Grown Diamond was created by Chemical Vapor Deposition (CVD) growth process and may include post-growth treatment. Type IIa



**IGI**



May 6, 2024  
IGI Report No. **LG621488279**  
**PRINCESS CUT**  
**6.33 X 6.16 X 4.49 MM**  
Carat Weight **1.57 CARAT**  
Color Grade **J**  
Clarity Grade **VVS 2**  
Depth **72.9%**  
Table **74%**  
Girdle **Slightly Thick**  
Culet **Pointed**  
Polish **VERY GOOD**  
Symmetry **VERY GOOD**  
Fluorescence **NONE**  
Inscription(s) **IGI LG621488279**

Comments: This Laboratory Grown Diamond was created by Chemical Vapor Deposition (CVD) growth process and may include post-growth treatment. Type IIa