



ELECTRONIC COPY

LG621489003

Report verification at igi.org

LABORATORY GROWN DIAMOND REPORT

February 22, 2024
IGI Report Number **LG621489003**

Description **LABORATORY GROWN
DIAMOND**

Shape and Cutting Style **SQUARE CUSHION MODIFIED
BRILLIANT**

Measurements **7.35 X 7.26 X 4.95 MM**

GRADING RESULTS

Carat Weight **2.07 CARATS**

Color Grade **G**

Clarity Grade **VS 1**

ADDITIONAL GRADING INFORMATION

Polish **EXCELLENT**

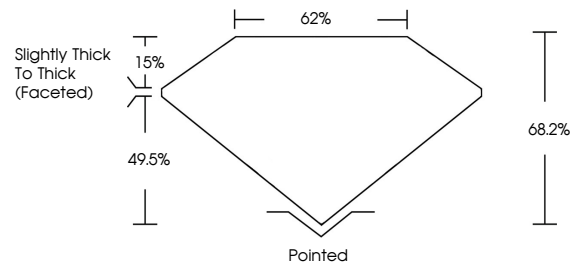
Symmetry **EXCELLENT**

Fluorescence **NONE**

Inscription(s) **IGI LG621489003**

Comments: This Laboratory Grown Diamond was created by Chemical Vapor Deposition (CVD) growth process and may include post-growth treatment. Type IIa

PROPORTIONS



GRADING SCALES

CLARITY

IF	VVS ¹⁻²	VS ¹⁻²	SI ¹⁻²	I ¹⁻³
Internally Flawless	Very Very Slightly Included	Very Slightly Included	Slightly Included	Included

COLOR

D	E	F	G	H	I	J	Faint	Very Light	Light
---	---	---	---	---	---	---	-------	------------	-------

February 22, 2024
IGI Report Number **LG621489003**
Description **LABORATORY GROWN
DIAMOND**
Shape and Cutting Style **SQUARE CUSHION MODIFIED
BRILLIANT**

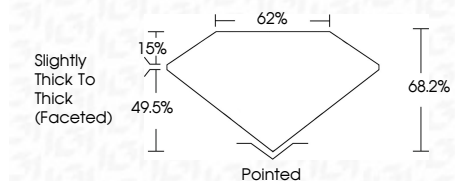
Measurements **7.35 X 7.26 X 4.95 MM**

GRADING RESULTS

Carat Weight **2.07 CARATS**

Color Grade **G**

Clarity Grade **VS 1**



ADDITIONAL GRADING INFORMATION

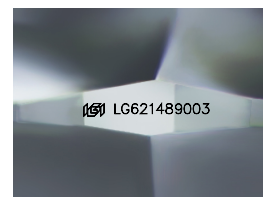
Polish **EXCELLENT**

Symmetry **EXCELLENT**

Fluorescence **NONE**

Inscription(s) **IGI LG621489003**

Comments: This Laboratory Grown Diamond was created by Chemical Vapor Deposition (CVD) growth process and may include post-growth treatment. Type IIa



Sample Image Used



IGI

February 22, 2024
IGI Report No **LG621489003**
SQUARE CUSHION MODIFIED BRILLIANT
7.35 X 7.26 X 4.95 MM
Carat Weight **2.07 CARATS**
Color Grade **G**
Clarity Grade **VS 1**
Depth **68.2%**
Table **62%**
Girdle **Slightly Thick To Thick (Faceted)**
Culet **Pointed**
Polish **EXCELLENT**
Symmetry **EXCELLENT**
Fluorescence **NONE**
Inscription(s) **IGI LG621489003**
Comments: This Laboratory Grown Diamond was created by Chemical Vapor Deposition (CVD) growth process and may include post-growth treatment. Type IIa