



ELECTRONIC COPY

LG621489210

Report verification at igi.org

LABORATORY GROWN DIAMOND REPORT

February 28, 2024
IGI Report Number **LG621489210**

Description **LABORATORY GROWN
DIAMOND**

Shape and Cutting Style **PRINCESS CUT**

Measurements **5.44 X 5.34 X 3.88 MM**

GRADING RESULTS

Carat Weight **1.01 CARAT**

Color Grade **F**

Clarity Grade **VS 1**

ADDITIONAL GRADING INFORMATION

Polish **EXCELLENT**

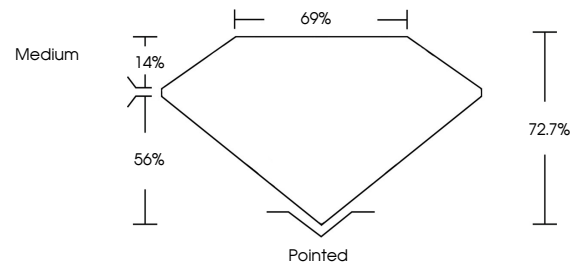
Symmetry **EXCELLENT**

Fluorescence **NONE**

Inscription(s) **IGI LG621489210**

Comments: This Laboratory Grown Diamond was created by Chemical Vapor Deposition (CVD) growth process and may include post-growth treatment. Type IIa

PROPORTIONS



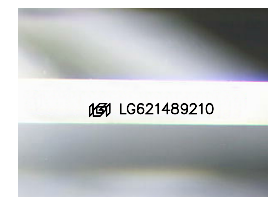
GRADING SCALES

CLARITY

IF	VVS ¹⁻²	VS ¹⁻²	SI ¹⁻²	I ¹⁻³
Internally Flawless	Very Very Slightly Included	Very Slightly Included	Slightly Included	Included

COLOR

D	E	F	G	H	I	J	Faint	Very Light	Light
---	---	---	---	---	---	---	-------	------------	-------



Sample Image Used

February 28, 2024

IGI Report Number **LG621489210**

Description **LABORATORY GROWN
DIAMOND**

Shape and Cutting Style **PRINCESS CUT**

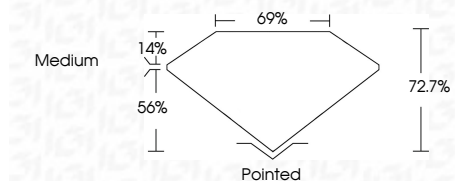
Measurements **5.44 X 5.34 X 3.88 MM**

GRADING RESULTS

Carat Weight **1.01 CARAT**

Color Grade **F**

Clarity Grade **VS 1**



ADDITIONAL GRADING INFORMATION

Polish **EXCELLENT**

Symmetry **EXCELLENT**

Fluorescence **NONE**

Inscription(s) **IGI LG621489210**

Comments: This Laboratory Grown Diamond was created by Chemical Vapor Deposition (CVD) growth process and may include post-growth treatment. Type IIa



IGI



February 28, 2024
IGI Report No **LG621489210**
PRINCESS CUT

5.44 X 5.34 X 3.88 MM

Carat Weight **1.01 CARAT**
Color Grade **F**
Clarity Grade **VS 1**
Depth **72.7%**
Table **69%**
Girdle **Medium**

Culet **Pointed**
Polish **EXCELLENT**
Symmetry **EXCELLENT**
Fluorescence **NONE**
Inscription(s) **IGI LG621489210**

Comments: This Laboratory Grown Diamond was created by Chemical Vapor Deposition (CVD) growth process and may include post-growth treatment. Type IIa