



**ELECTRONIC COPY**

LG621489319

Report verification at [igi.org](http://igi.org)

**LABORATORY GROWN DIAMOND REPORT**

February 29, 2024  
 IGI Report Number **LG621489319**  
 Description **LABORATORY GROWN  
DIAMOND**  
 Shape and Cutting Style **ROUND BRILLIANT**  
 Measurements **7.05 - 7.09 X 4.28 MM**

**GRADING RESULTS**

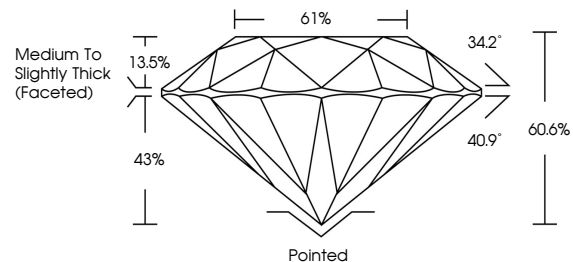
Carat Weight **1.33 CARAT**  
 Color Grade **F**  
 Clarity Grade **VVS 2**  
 Cut Grade **EXCELLENT**

**ADDITIONAL GRADING INFORMATION**

Polish **EXCELLENT**  
 Symmetry **EXCELLENT**  
 Fluorescence **NONE**  
 Inscription(s) **LG621489319**

Comments: This Laboratory Grown Diamond was created by Chemical Vapor Deposition (CVD) growth process and may include post-growth treatment. Type IIa

**PROPORTIONS**



**GRADING SCALES**

**CLARITY**

IF	VVS <sup>1-2</sup>	VS <sup>1-2</sup>	SI <sup>1-2</sup>	I <sup>1-3</sup>
Internally Flawless	Very Very Slightly Included	Very Slightly Included	Slightly Included	Included

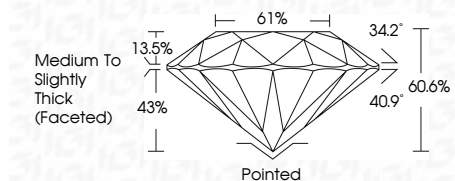
**COLOR**

D	E	F	G	H	I	J	Faint	Very Light	Light
---	---	---	---	---	---	---	-------	------------	-------



Sample Image Used

February 29, 2024  
 IGI Report Number **LG621489319**  
 Description **LABORATORY GROWN  
DIAMOND**  
 Shape and Cutting Style **ROUND BRILLIANT**  
 Measurements **7.05 - 7.09 X 4.28 MM**  
**GRADING RESULTS**  
 Carat Weight **1.33 CARAT**  
 Color Grade **F**  
 Clarity Grade **VVS 2**  
 Cut Grade **EXCELLENT**



**ADDITIONAL GRADING INFORMATION**

Polish **EXCELLENT**  
 Symmetry **EXCELLENT**  
 Fluorescence **NONE**  
 Inscription(s) **LG621489319**  
 Comments: This Laboratory Grown Diamond was created by Chemical Vapor Deposition (CVD) growth process and may include post-growth treatment. Type IIa



**IGI**



February 29, 2024	IGI Report No LG621489319	ROUND BRILLIANT	1.33 CARAT	F	VVS 2	EXCELLENT	60.6%	43%	34.2°	40.9°	60.6%	Pointed	EXCELLENT	EXCELLENT	NONE	LG621489319
Carat Weight	Color Grade	Clarity Grade	Depth	Table	Girdle	Culet	Polish	Symmetry	Fluorescence	Inscription(s)	Comments: This Laboratory Grown Diamond was created by Chemical Vapor Deposition (CVD) growth process and may include post-growth treatment. Type IIa					