



ELECTRONIC COPY

LABORATORY GROWN DIAMOND REPORT

March 5, 2024
 IGI Report Number **LG621489406**
 Description **LABORATORY GROWN
DIAMOND**
 Shape and Cutting Style **ROUND BRILLIANT**
 Measurements **8.51 - 8.53 X 5.23 MM**
GRADING RESULTS
 Carat Weight **2.32 CARATS**
 Color Grade **I**
 Clarity Grade **VVS 2**
 Cut Grade **IDEAL**

ADDITIONAL GRADING INFORMATION

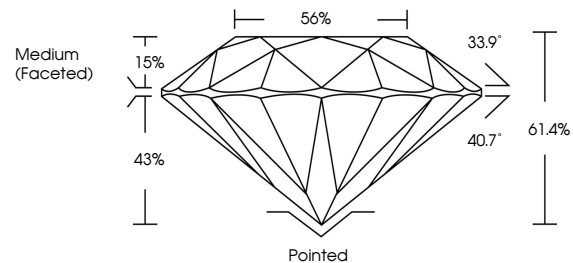
Polish **EXCELLENT**
 Symmetry **EXCELLENT**
 Fluorescence **NONE**
 Inscription(s) **IGI LG621489406**

Comments: This Laboratory Grown Diamond was created by Chemical Vapor Deposition (CVD) growth process and may include post-growth treatment. Type IIa

LABORATORY GROWN DIAMOND REPORT

LG621489406
 Report verification at igi.org

PROPORTIONS



**LABORATORY GROWN
DIAMOND REPORT**

LABORATORY GROWN DIAMOND REPORT

GRADING SCALES

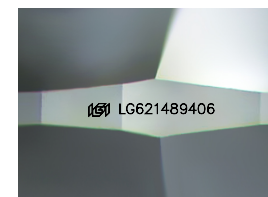
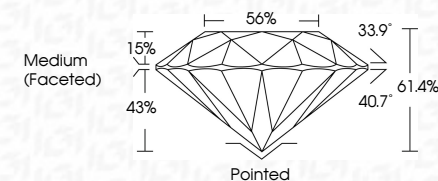
CLARITY

IF	VVS ¹⁻²	VS ¹⁻²	SI ¹⁻²	I ¹⁻³
Internally Flawless	Very Very Slightly Included	Very Slightly Included	Slightly Included	Included

COLOR

D	E	F	G	H	I	J	Faint	Very Light	Light
---	---	---	---	---	---	---	-------	------------	-------

March 5, 2024
 IGI Report Number **LG621489406**
 Description **LABORATORY GROWN
DIAMOND**
 Shape and Cutting Style **ROUND BRILLIANT**
 Measurements **8.51 - 8.53 X 5.23 MM**
GRADING RESULTS
 Carat Weight **2.32 CARATS**
 Color Grade **I**
 Clarity Grade **VVS 2**
 Cut Grade **IDEAL**



Sample Image Used

ADDITIONAL GRADING INFORMATION

Polish **EXCELLENT**
 Symmetry **EXCELLENT**
 Fluorescence **NONE**
 Inscription(s) **IGI LG621489406**
 Comments: This Laboratory Grown Diamond was created by Chemical Vapor Deposition (CVD) growth process and may include post-growth treatment. Type IIa



March 5, 2024	IGI Report No LG621489406	2.32 CARATS	I	Pointed
8.51 - 8.53 X 5.23 MM	ROUND BRILLIANT	Color Grade	VVS 2	EXCELLENT
		Clarity Grade	IDEAL	EXCELLENT
		Depth	61.4%	NONE
		Table	56%	IGI LG621489406
		Grille	Medium (Faceted)	
		Culet		
		Polish		
		Symmetry		
		Fluorescence		
		Inscriptions(s)		

Comments: This Laboratory Grown Diamond was created by Chemical Vapor Deposition (CVD) growth process and may include post-growth treatment. Type IIa

