



**INTERNATIONAL  
GEMOLOGICAL  
INSTITUTE**

**ELECTRONIC COPY**

**LABORATORY GROWN  
DIAMOND REPORT**

**LG622469778**

**IGI LABORATORY GROWN  
DIAMOND ID REPORT**

February 20, 2024  
IGI Report Number **LG622469778**  
**EMERALD CUT**  
**5.78 X 3.76 X 2.99 MM**  
Carat Weight 0.65 CARAT  
Color Grade D  
Clarity Grade VVS 2  
Polish EXCELLENT  
Symmetry EXCELLENT  
Fluorescence NONE  
Inscription(s) LG622469778

Comments: This Laboratory Grown Diamond was created by Chemical Vapor Deposition (CVD) growth process and may include post-growth treatment. Type Ila

**LABORATORY GROWN DIAMOND REPORT**

**IGI LABORATORY GROWN DIAMOND IDENTIFICATION REPORT**

February 20, 2024  
IGI Report Number LG622469778  
Description LABORATORY GROWN DIAMOND  
Shape and Cutting Style EMERALD CUT  
Measurements 5.78 X 3.76 X 2.99 MM

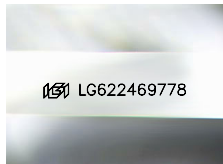
**GRADING RESULTS**

Carat Weight 0.65 CARAT  
Color Grade D  
Clarity Grade VVS 2

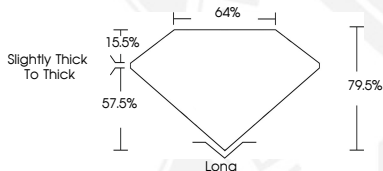
**ADDITIONAL GRADING INFORMATION**

Polish EXCELLENT  
Symmetry EXCELLENT  
Fluorescence NONE  
Inscription(s) LG622469778

Comments: This Laboratory Grown Diamond was created by Chemical Vapor Deposition (CVD) growth process and may include post-growth treatment.  
Type Ila



Sample Image Used



**IGI LABORATORY GROWN  
DIAMOND ID REPORT**

February 20, 2024  
IGI Report Number **LG622469778**  
**EMERALD CUT**  
**5.78 X 3.76 X 2.99 MM**  
Carat Weight 0.65 CARAT  
Color Grade D  
Clarity Grade VVS 2  
Polish EXCELLENT  
Symmetry EXCELLENT  
Fluorescence NONE  
Inscription(s) LG622469778

Comments: This Laboratory Grown Diamond was created by Chemical Vapor Deposition (CVD) growth process and may include post-growth treatment. Type Ila



THIS DOCUMENT WAS PRODUCED WITH THE FOLLOWING SECURITY MEASURES: SPECIAL DOCUMENT PAPER, INK SCREENS, WATERMARK, BACKGROUND DESIGN, HOLOGRAM AND OTHER SECURITY FEATURES NOT LISTED AND DO EXCEED DOCUMENT SECURITY INDUSTRY GUIDELINES.

For terms & conditions and to verify this report, please visit [www.igi.org](http://www.igi.org)