



LABORATORY GROWN DIAMOND REPORT

February 23, 2024	
IGI Report Number	LG622478592
Description	LABORATORY GROWN DIAMOND
Shape and Cutting Style	EMERALD CUT
Measurements	8.46 X 6.04 X 4.06 MM

Carat Weight	2.04 CARATS
Color Grade	E
Clarity Grade	VS 1

Polish	EXCELLENT
Symmetry	EXCELLENT
Fluorescence	NONE

Inscription(s)  LG622478592

Comments: This Laboratory Grown Diamond was created by Chemical Vapor Deposition (CVD) growth process and may include post-growth treatment.
Type IIa

LG622478592
Report verification at lgi.org

The diagram is a diamond shape with four vertices. Each vertex is labeled with a category and a percentage. The top vertex is labeled 'Medium' with '14.5%'. The bottom vertex is labeled 'Long' with '49.5%'. The left vertex is labeled 'Short' with '64%'. The right vertex is labeled 'Very Short' with '67.2%'. The percentages are arranged such that they sum to 100%.

Red symbols indicate internal characteristics.
Green symbols indicate external characteristics.

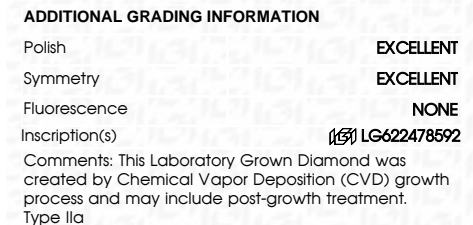
D E F G H I J Faint Very Light Light



FD - 10 20



February 23, 2024	
IGI Report Number	LG622478592
Description	LABORATORY GROWN DIAMOND
Shape and Cutting Style	EMERALD CUT
Measurements	8.46 X 6.04 X 4.06 MM
GRADING RESULTS	
Carat Weight	2.04 CARATS
Color Grade	E
Clarity Grade	VS 1



February 23, 2024
 IGI Report No LG622478592

2.04 CARATS	VS 1	67.2%	64%	Medium	Long	EXCELLENT	EXCELLENT	NONE	Serial G502278792
Carat Weight	Clarity Grade	Depth	Table	Girdle	Quiet	Polish	Symmetry	Fluorescence	Inscriptions(s)
Color Grade									

Comments:
This Laboratory Grown Diamond was created by Chemical Vapor Deposition (CVD) growth process and may include post-growth treatment.
Type IIa