



ELECTRONIC COPY

LABORATORY GROWN DIAMOND REPORT

February 19, 2024
 IGI Report Number **LG622488402**
 Description **LABORATORY GROWN
DIAMOND**
 Shape and Cutting Style **ROUND BRILLIANT**
 Measurements **6.87 - 6.90 X 4.23 MM**
GRADING RESULTS
 Carat Weight **1.23 CARAT**
 Color Grade **E**
 Clarity Grade **VS 2**
 Cut Grade **IDEAL**

ADDITIONAL GRADING INFORMATION

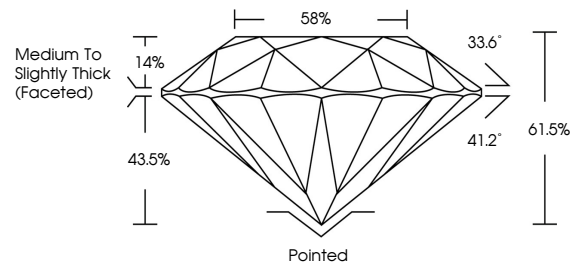
Polish **EXCELLENT**
 Symmetry **EXCELLENT**
 Fluorescence **NONE**
 Inscription(s) **IGI LG622488402**

Comments: This Laboratory Grown Diamond was created by Chemical Vapor Deposition (CVD) growth process and may include post-growth treatment. Type IIa

LABORATORY GROWN DIAMOND REPORT

LG622488402
 Report verification at igi.org

PROPORTIONS



**LABORATORY GROWN
DIAMOND REPORT**

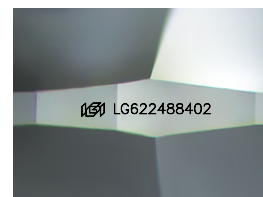
GRADING SCALES

CLARITY

IF	VVS ¹⁻²	VS ¹⁻²	SI ¹⁻²	I ¹⁻³
Internally Flawless	Very Very Slightly Included	Very Slightly Included	Slightly Included	Included

COLOR

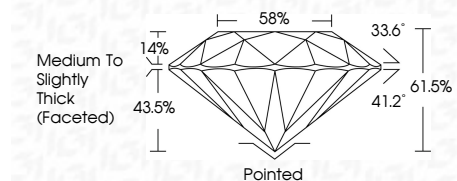
D	E	F	G	H	I	J	Faint	Very Light	Light
---	---	---	---	---	---	---	-------	------------	-------



Sample Image Used

LABORATORY GROWN DIAMOND REPORT

February 19, 2024
 IGI Report Number **LG622488402**
 Description **LABORATORY GROWN
DIAMOND**
 Shape and Cutting Style **ROUND BRILLIANT**
 Measurements **6.87 - 6.90 X 4.23 MM**
GRADING RESULTS
 Carat Weight **1.23 CARAT**
 Color Grade **E**
 Clarity Grade **VS 2**
 Cut Grade **IDEAL**



ADDITIONAL GRADING INFORMATION

Polish **EXCELLENT**
 Symmetry **EXCELLENT**
 Fluorescence **NONE**
 Inscription(s) **IGI LG622488402**
 Comments: This Laboratory Grown Diamond was created by Chemical Vapor Deposition (CVD) growth process and may include post-growth treatment. Type IIa



February 19, 2024	IGI Report No LG622488402	1.23 CARAT	E	VS 2	IDEAL	61.5%	58%	Medium To Slightly Thick (Faceted)	Pointed	EXCELLENT	EXCELLENT	NONE	IGI LG622488402
IGI Report No LG622488402	ROUND BRILLIANT	6.87 - 6.90 X 4.23 MM	Color Grade	Clarity Grade	Cut Grade	Depth	Table	Girdle	Culet	Polish	Symmetry	Fluorescence	Inscription(s)

Comments: This Laboratory Grown Diamond was created by Chemical Vapor Deposition (CVD) growth process and may include post-growth treatment. Type IIa