



ELECTRONIC COPY

LG622488466

Report verification at igi.org

LABORATORY GROWN DIAMOND REPORT

February 19, 2024
 IGI Report Number **LG622488466**
 Description **LABORATORY GROWN
DIAMOND**
 Shape and Cutting Style **ROUND BRILLIANT**
 Measurements **6.55 - 6.60 X 4.12 MM**

GRADING RESULTS

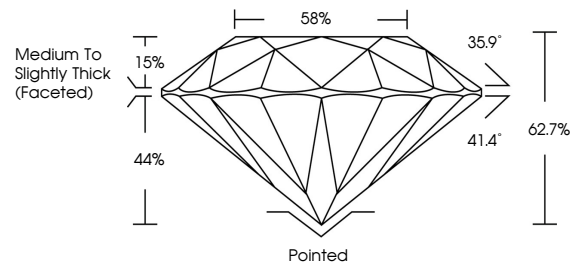
Carat Weight **1.10 CARAT**
 Color Grade **D**
 Clarity Grade **VS 2**
 Cut Grade **EXCELLENT**

ADDITIONAL GRADING INFORMATION

Polish **EXCELLENT**
 Symmetry **EXCELLENT**
 Fluorescence **NONE**
 Inscription(s) **IGI LG622488466**

Comments: This Laboratory Grown Diamond was created by Chemical Vapor Deposition (CVD) growth process and may include post-growth treatment. Type IIa

PROPORTIONS



GRADING SCALES

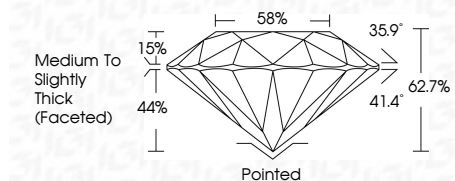
CLARITY

IF	VVS ¹⁻²	VS ¹⁻²	SI ¹⁻²	I ¹⁻³
Internally Flawless	Very Very Slightly Included	Very Slightly Included	Slightly Included	Included

COLOR

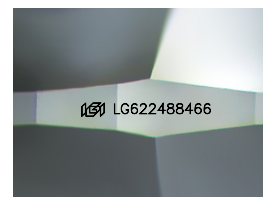
D	E	F	G	H	I	J	Faint	Very Light	Light
---	---	---	---	---	---	---	-------	------------	-------

February 19, 2024
 IGI Report Number **LG622488466**
 Description **LABORATORY GROWN
DIAMOND**
 Shape and Cutting Style **ROUND BRILLIANT**
 Measurements **6.55 - 6.60 X 4.12 MM**
GRADING RESULTS
 Carat Weight **1.10 CARAT**
 Color Grade **D**
 Clarity Grade **VS 2**
 Cut Grade **EXCELLENT**



ADDITIONAL GRADING INFORMATION

Polish **EXCELLENT**
 Symmetry **EXCELLENT**
 Fluorescence **NONE**
 Inscription(s) **IGI LG622488466**
 Comments: This Laboratory Grown Diamond was created by Chemical Vapor Deposition (CVD) growth process and may include post-growth treatment. Type IIa



Sample Image Used



February 19, 2024	1.10 CARAT	D	VS 2	EXCELLENT	88%	Pointed	EXCELLENT	EXCELLENT	NONE	IGI LG622488466
IGI Report No LG622488466	6.55 - 6.60 X 4.12 MM	ROUND BRILLIANT	Carat Weight	Color Grade	Clarity Grade	Depth	Table	Grille	Medium To Slightly Thick (Faceted)	Culet
										Polish
										Symmetry
										Fluorescence
										Inscription(s)
										Comments:
										This Laboratory Grown Diamond was created by Chemical Vapor Deposition (CVD) growth process and may include post-growth treatment. Type IIa