



ELECTRONIC COPY

LABORATORY GROWN DIAMOND REPORT

February 23, 2024	
IGI Report Number	LG622490165
Description	LABORATORY GROWN DIAMOND
Shape and Cutting Style	EMERALD CUT
Measurements	8.05 X 5.87 X 4.23 MM

GRADING RESULTS

Carat Weight	2.02 CARATS
Color Grade	FANCY INTENSE PINK
Clarity Grade	VS 1

ADDITIONAL GRADING INFORMATION

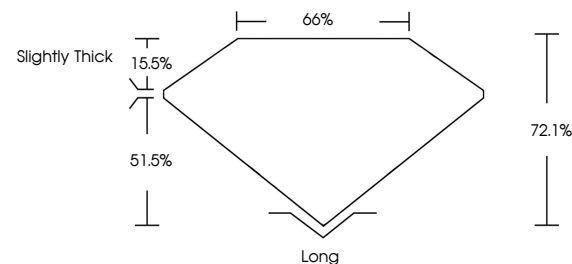
Polish	EXCELLENT
Symmetry	EXCELLENT
Fluorescence	SLIGHT
Inscription(s)	 LG622490165

Comments: This Laboratory Grown Diamond was created by Chemical Vapor Deposition (CVD) growth process.
Indications of post-growth treatment.

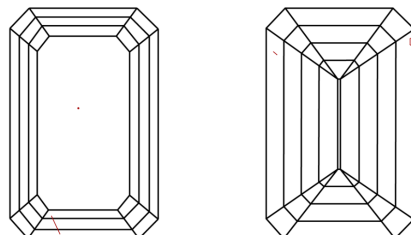
LABORATORY GROWN DIAMOND REPORT

LG622490165
Report verification at igi.org

PROPORTIONS



CLARITY CHARACTERISTICS



KEY TO SYMBOLS

Red symbols indicate internal characteristics.
Green symbols indicate external characteristics.

LABORATORY GROWN
DIAMOND REPORT

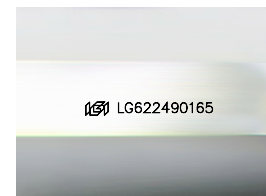
GRADING SCALES

CLARITY

IF	VVS ¹⁻²	VS ¹⁻²	SI ¹⁻²	I ¹⁻³
Internally Flawless	Very Very Slightly Included	Very Slightly Included	Slightly Included	Included

COLOR

D	E	F	G	H	I	J	Faint	Very Light	Light
Light Tint			Fancy Light		Fancy		Fancy Intense		Fancy Vivid



Sample Image Used

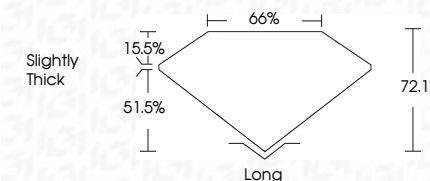


© IGI 2020, International Gemological Institute

FD - 10 20



February 23, 2024	
IGI Report Number	LG622490165
Description	LABORATORY GROWN DIAMOND
Shape and Cutting Style	EMERALD CUT
Measurements	8.05 X 5.87 X 4.23 MM
GRADING RESULTS	
Carat Weight	2.02 CARATS
Color Grade	FANCY INTENSE PINK
Clarity Grade	VS 1



ADDITIONAL GRADING INFORMATION

Polish	EXCELLENT
Symmetry	EXCELLENT
Fluorescence	SLIGHT
Inscription(s)	(15) LG622490165

Comments: This Laboratory Grown Diamond was created by Chemical Vapor Deposition (CVD) growth process.
Indications of post-growth treatment.

February 23, 2024
 IGI Report No LG622490165
 EMERALD CITT

9.05 X 5.87 X 4.23 MM	Carat Weight	2.02 CARATS
	Color Grade	FANCY INTENSE PINK
	Clarity Grade	VS 1
	Depth	72.1%
	Table	66%
	Grade	Slightly Thick
	Color	Long
	Polish	EXCELLENT
	Symmetry	EXCELLENT
	Fluorescence	SLIGHT

Comments:
This Laboratory Grown Diamond was created by Chemical Vapor Deposition (CVD) growth process.