



ELECTRONIC COPY

LG622490267

Report verification at igi.org

LABORATORY GROWN DIAMOND REPORT

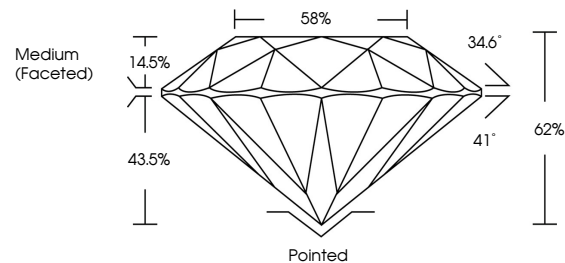
February 17, 2024
 IGI Report Number **LG622490267**
 Description **LABORATORY GROWN
DIAMOND**
 Shape and Cutting Style **ROUND BRILLIANT**
 Measurements **8.90 - 8.94 X 5.52 MM**
GRADING RESULTS
 Carat Weight **2.70 CARATS**
 Color Grade **F**
 Clarity Grade **VVS 2**
 Cut Grade **IDEAL**

ADDITIONAL GRADING INFORMATION

Polish **EXCELLENT**
 Symmetry **EXCELLENT**
 Fluorescence **NONE**
 Inscription(s) **LG622490267**

Comments: This Laboratory Grown Diamond was created by Chemical Vapor Deposition (CVD) growth process and may include post-growth treatment. Type IIa

PROPORTIONS



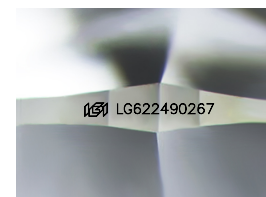
GRADING SCALES

CLARITY

IF	VVS ¹⁻²	VS ¹⁻²	SI ¹⁻²	I ¹⁻³
Internally Flawless	Very Very Slightly Included	Very Slightly Included	Slightly Included	Included

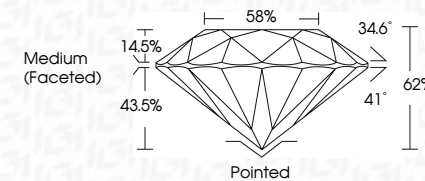
COLOR

D	E	F	G	H	I	J	Faint	Very Light	Light
---	---	---	---	---	---	---	-------	------------	-------



Sample Image Used

February 17, 2024
 IGI Report Number **LG622490267**
 Description **LABORATORY GROWN
DIAMOND**
 Shape and Cutting Style **ROUND BRILLIANT**
 Measurements **8.90 - 8.94 X 5.52 MM**
GRADING RESULTS
 Carat Weight **2.70 CARATS**
 Color Grade **F**
 Clarity Grade **VVS 2**
 Cut Grade **IDEAL**



ADDITIONAL GRADING INFORMATION

Polish **EXCELLENT**
 Symmetry **EXCELLENT**
 Fluorescence **NONE**
 Inscription(s) **LG622490267**
 Comments: This Laboratory Grown Diamond was created by Chemical Vapor Deposition (CVD) growth process and may include post-growth treatment. Type IIa



IGI

February 17, 2024	IGI Report No LG622490267	ROUND BRILLIANT	8.90 - 8.94 X 5.52 MM	2.70 CARATS	F	VVS 2	IDEAL	62%	58%	Medium (Faceted)	Pointed	EXCELLENT	EXCELLENT	NONE	LG622490267
Color Grade	Clarity Grade	Cut Grade	Depth	Table	Girdle	Color	Polish	Symmetry	Fluorescence	Inscription(s)	Comments: This Laboratory Grown Diamond was created by Chemical Vapor Deposition (CVD) growth process and may include post-growth treatment. Type IIa				