



ELECTRONIC COPY

LG622491921

Report verification at igi.org

LABORATORY GROWN DIAMOND REPORT

February 26, 2024
 IGI Report Number **LG622491921**
 Description **LABORATORY GROWN
DIAMOND**
 Shape and Cutting Style **ROUND BRILLIANT**
 Measurements **10.38 - 10.40 X 5.99 MM**

GRADING RESULTS

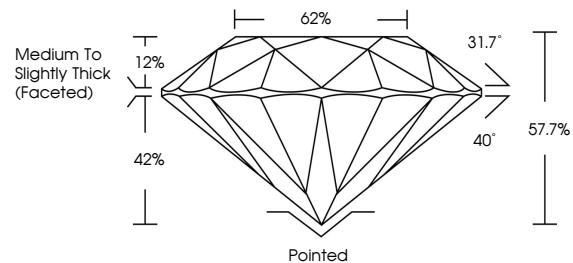
Carat Weight **4.02 CARATS**
 Color Grade **H**
 Clarity Grade **VS 2**
 Cut Grade **EXCELLENT**

ADDITIONAL GRADING INFORMATION

Polish **EXCELLENT**
 Symmetry **EXCELLENT**
 Fluorescence **NONE**
 Inscription(s) **IGI LG622491921**

Comments: This Laboratory Grown Diamond was created by Chemical Vapor Deposition (CVD) growth process and may include post-growth treatment. Type IIa

PROPORTIONS



GRADING SCALES

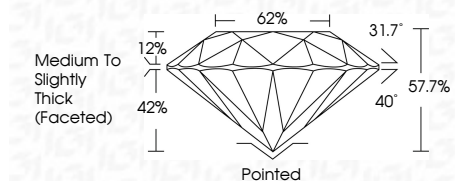
CLARITY

IF	VVS ¹⁻²	VS ¹⁻²	SI ¹⁻²	I ¹⁻³
Internally Flawless	Very Very Slightly Included	Very Slightly Included	Slightly Included	Included

COLOR

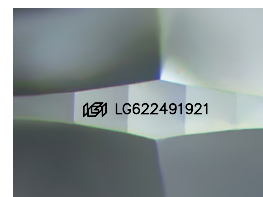
D	E	F	G	H	I	J	Faint	Very Light	Light
---	---	---	---	---	---	---	-------	------------	-------

February 26, 2024
 IGI Report Number **LG622491921**
 Description **LABORATORY GROWN
DIAMOND**
 Shape and Cutting Style **ROUND BRILLIANT**
 Measurements **10.38 - 10.40 X 5.99 MM**
GRADING RESULTS
 Carat Weight **4.02 CARATS**
 Color Grade **H**
 Clarity Grade **VS 2**
 Cut Grade **EXCELLENT**



ADDITIONAL GRADING INFORMATION

Polish **EXCELLENT**
 Symmetry **EXCELLENT**
 Fluorescence **NONE**
 Inscription(s) **IGI LG622491921**
 Comments: This Laboratory Grown Diamond was created by Chemical Vapor Deposition (CVD) growth process and may include post-growth treatment. Type IIa



Sample Image Used



IGI

February 26, 2024
 IGI Report No LG622491921
ROUND BRILLIANT
 10.38 - 10.40 X 5.99 MM
 Carat Weight **4.02 CARATS**
 Color Grade **H**
 Clarity Grade **VS 2**
 Cut Grade **EXCELLENT**
 Depth **57.7%**
 Table **62%**
 Girdle **Medium To Slightly Thick (Faceted)**
 Culet **Pointed**
 Polish **EXCELLENT**
 Symmetry **EXCELLENT**
 Fluorescence **NONE**
 Inscription(s) **IGI LG622491921**
 Comments: This Laboratory Grown Diamond was created by Chemical Vapor Deposition (CVD) growth process and may include post-growth treatment. Type IIa