



**ELECTRONIC COPY**

LG623405762

Report verification at [igi.org](http://igi.org)

**LABORATORY GROWN DIAMOND REPORT**

March 1, 2024  
IGI Report Number **LG623405762**

Description **LABORATORY GROWN  
DIAMOND**

Shape and Cutting Style **HEART BRILLIANT**

Measurements **8.94 X 10.50 X 5.99 MM**

**GRADING RESULTS**

Carat Weight **3.30 CARATS**

Color Grade **I**

Clarity Grade **VS 1**

**ADDITIONAL GRADING INFORMATION**

Polish **EXCELLENT**

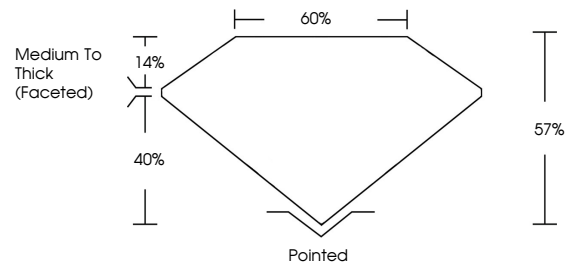
Symmetry **VERY GOOD**

Fluorescence **NONE**

Inscription(s) **IGI LG623405762**

Comments: This Laboratory Grown Diamond was created by Chemical Vapor Deposition (CVD) growth process and may include post-growth treatment. Type IIa

**PROPORTIONS**



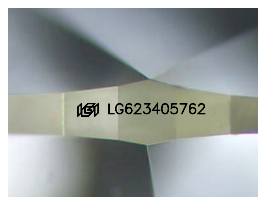
**GRADING SCALES**

**CLARITY**

IF	VVS <sup>1-2</sup>	VS <sup>1-2</sup>	SI <sup>1-2</sup>	I <sup>1-3</sup>
Internally Flawless	Very Very Slightly Included	Very Slightly Included	Slightly Included	Included

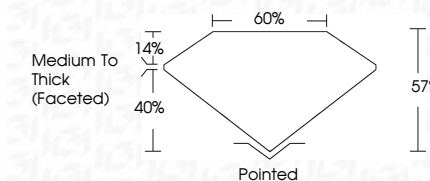
**COLOR**

D	E	F	G	H	I	J	Faint	Very Light	Light
---	---	---	---	---	---	---	-------	------------	-------



Sample Image Used

March 1, 2024  
IGI Report Number **LG623405762**  
Description **LABORATORY GROWN  
DIAMOND**  
Shape and Cutting Style **HEART BRILLIANT**  
Measurements **8.94 X 10.50 X 5.99 MM**  
**GRADING RESULTS**  
Carat Weight **3.30 CARATS**  
Color Grade **I**  
Clarity Grade **VS 1**



**ADDITIONAL GRADING INFORMATION**

Polish **EXCELLENT**

Symmetry **VERY GOOD**

Fluorescence **NONE**

Inscription(s) **IGI LG623405762**

Comments: This Laboratory Grown Diamond was created by Chemical Vapor Deposition (CVD) growth process and may include post-growth treatment. Type IIa



**IGI**

March 1, 2024  
IGI Report No **LG623405762**  
**HEART BRILLIANT**  
**8.94 X 10.50 X 5.99 MM**  
Carat Weight **3.30 CARATS**  
Color Grade **I**  
Clarity Grade **VS 1**  
Table **57%**  
Girdle **40%**  
**Medium To Thick (Faceted)**  
Culet **Pointed**  
Polish **EXCELLENT**  
Symmetry **VERY GOOD**  
Fluorescence **NONE**  
Inscription(s) **IGI LG623405762**

Comments: This Laboratory Grown Diamond was created by Chemical Vapor Deposition (CVD) growth process and may include post-growth treatment. Type IIa