



**ELECTRONIC COPY**

LG623405923  
Report verification at igi.org

**LABORATORY GROWN DIAMOND REPORT**

March 4, 2024  
IGI Report Number **LG623405923**

Description **LABORATORY GROWN  
DIAMOND**

Shape and Cutting Style **EMERALD CUT**

Measurements **8.58 X 6.07 X 4.05 MM**

**GRADING RESULTS**

Carat Weight **2.04 CARATS**

Color Grade **I**

Clarity Grade **VVS 2**

**ADDITIONAL GRADING INFORMATION**

Polish **EXCELLENT**

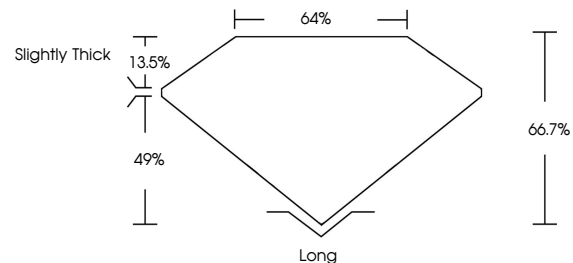
Symmetry **EXCELLENT**

Fluorescence **NONE**

Inscription(s) **IGI LG623405923**

Comments: This Laboratory Grown Diamond was created by Chemical Vapor Deposition (CVD) growth process and may include post-growth treatment. Type IIa

**PROPORTIONS**



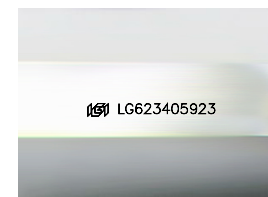
**GRADING SCALES**

**CLARITY**

IF	VVS <sup>1-2</sup>	VS <sup>1-2</sup>	SI <sup>1-2</sup>	I <sup>1-3</sup>
Internally Flawless	Very Very Slightly Included	Very Slightly Included	Slightly Included	Included

**COLOR**

D	E	F	G	H	I	J	Faint	Very Light	Light
---	---	---	---	---	---	---	-------	------------	-------



Sample Image Used

March 4, 2024  
IGI Report Number **LG623405923**  
Description **LABORATORY GROWN  
DIAMOND**

Shape and Cutting Style **EMERALD CUT**

Measurements **8.58 X 6.07 X 4.05 MM**

**GRADING RESULTS**

Carat Weight **2.04 CARATS**

Color Grade **I**

Clarity Grade **VVS 2**

**ADDITIONAL GRADING INFORMATION**

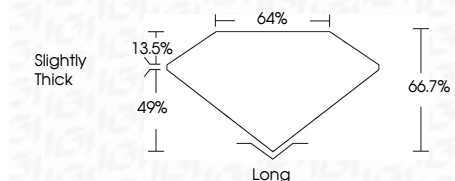
Polish **EXCELLENT**

Symmetry **EXCELLENT**

Fluorescence **NONE**

Inscription(s) **IGI LG623405923**

Comments: This Laboratory Grown Diamond was created by Chemical Vapor Deposition (CVD) growth process and may include post-growth treatment. Type IIa



**IGI**

March 4, 2024  
IGI Report No. **LG623405923**  
**EMERALD CUT**  
Carat Weight **2.04 CARATS**  
Color Grade **I**  
Clarity Grade **VVS 2**  
Table **64%**  
Girdle **49%**  
Culet **Slightly Thick**  
Polish **Long**  
Symmetry **EXCELLENT**  
Fluorescence **EXCELLENT**  
Inscription(s) **NONE**  
IGI LG623405923

Comments: This Laboratory Grown Diamond was created by Chemical Vapor Deposition (CVD) growth process and may include post-growth treatment. Type IIa