



ELECTRONIC COPY

LG623405949

Report verification at igi.org

LABORATORY GROWN DIAMOND REPORT

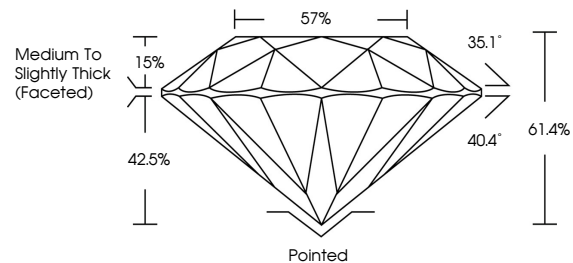
March 5, 2024
 IGI Report Number **LG623405949**
 Description **LABORATORY GROWN
DIAMOND**
 Shape and Cutting Style **ROUND BRILLIANT**
 Measurements **7.60 - 7.62 X 4.67 MM**
GRADING RESULTS
 Carat Weight **1.69 CARAT**
 Color Grade **D**
 Clarity Grade **VS 1**
 Cut Grade **IDEAL**

ADDITIONAL GRADING INFORMATION

Polish **EXCELLENT**
 Symmetry **EXCELLENT**
 Fluorescence **NONE**
 Inscription(s) **LG623405949**

Comments: This Laboratory Grown Diamond was created by Chemical Vapor Deposition (CVD) growth process and may include post-growth treatment. Type IIa

PROPORTIONS



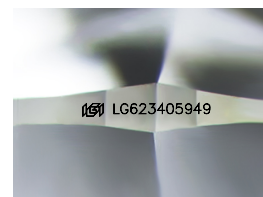
GRADING SCALES

CLARITY

| IF | VVS ¹⁻² | VS ¹⁻² | SI ¹⁻² | I ¹⁻³ |
|---------------------|-----------------------------|------------------------|-------------------|------------------|
| Internally Flawless | Very Very Slightly Included | Very Slightly Included | Slightly Included | Included |

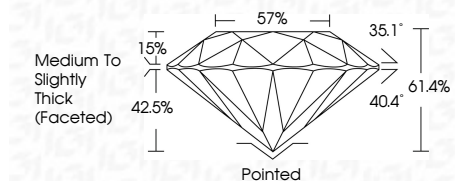
COLOR

| D | E | F | G | H | I | J | Faint | Very Light | Light |
|---|---|---|---|---|---|---|-------|------------|-------|
|---|---|---|---|---|---|---|-------|------------|-------|



Sample Image Used

March 5, 2024
 IGI Report Number **LG623405949**
 Description **LABORATORY GROWN
DIAMOND**
 Shape and Cutting Style **ROUND BRILLIANT**
 Measurements **7.60 - 7.62 X 4.67 MM**
GRADING RESULTS
 Carat Weight **1.69 CARAT**
 Color Grade **D**
 Clarity Grade **VS 1**
 Cut Grade **IDEAL**



ADDITIONAL GRADING INFORMATION

Polish **EXCELLENT**
 Symmetry **EXCELLENT**
 Fluorescence **NONE**
 Inscription(s) **LG623405949**
 Comments: This Laboratory Grown Diamond was created by Chemical Vapor Deposition (CVD) growth process and may include post-growth treatment. Type IIa



| | | |
|----------------|---|------------------------|
| March 5, 2024 | IGI Report No. LG623405949 | ROUND BRILLIANT |
| Carat Weight | 1.69 CARAT | D |
| Color Grade | VS 1 | IDEAL |
| Clarity Grade | VS 1 | IDEAL |
| Cut Grade | 61.4% | 57% |
| Depth | Medium To Slightly Thick (Faceted) | Pointed |
| Table | EXCELLENT | EXCELLENT |
| Girdle | NONE | NONE |
| Culet | IGI LG623405949 | |
| Polish | | |
| Symmetry | | |
| Fluorescence | | |
| Inscription(s) | | |

Comments: This Laboratory Grown Diamond was created by Chemical Vapor Deposition (CVD) growth process and may include post-growth treatment. Type IIa