



ELECTRONIC COPY

LABORATORY GROWN DIAMOND REPORT

March 4, 2024
IGI Report Number **LG623405963**

Description **LABORATORY GROWN
DIAMOND**

Shape and Cutting Style **CUSHION MODIFIED BRILLIANT**

Measurements **6.90 X 6.45 X 4.35 MM**

GRADING RESULTS

Carat Weight **1.54 CARAT**

Color Grade **J**

Clarity Grade **VVS 2**

ADDITIONAL GRADING INFORMATION

Polish **EXCELLENT**

Symmetry **EXCELLENT**

Fluorescence **NONE**

Inscription(s) **IGI LG623405963**

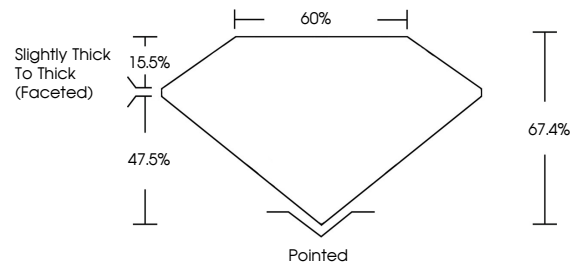
Comments: This Laboratory Grown Diamond was created by Chemical Vapor Deposition (CVD) growth process and may include post-growth treatment. Type IIa

LABORATORY GROWN DIAMOND REPORT

LG623405963

Report verification at igi.org

PROPORTIONS



**LABORATORY GROWN
DIAMOND REPORT**

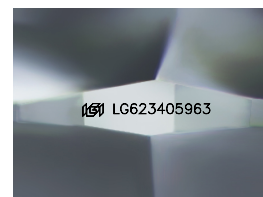
GRADING SCALES

CLARITY

IF	VVS ¹⁻²	VS ¹⁻²	SI ¹⁻²	I ¹⁻³
Internally Flawless	Very Very Slightly Included	Very Slightly Included	Slightly Included	Included

COLOR

D	E	F	G	H	I	J	Faint	Very Light	Light
---	---	---	---	---	---	---	-------	------------	-------



Sample Image Used

LABORATORY GROWN DIAMOND REPORT

March 4, 2024
IGI Report Number **LG623405963**

Description **LABORATORY GROWN
DIAMOND**

Shape and Cutting Style **CUSHION MODIFIED
BRILLIANT**

Measurements **6.90 X 6.45 X 4.35 MM**

GRADING RESULTS

Carat Weight **1.54 CARAT**

Color Grade **J**

Clarity Grade **VVS 2**

ADDITIONAL GRADING INFORMATION

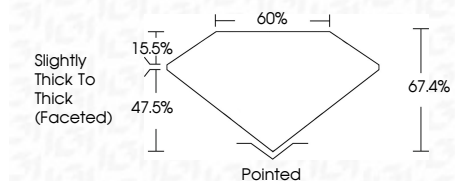
Polish **EXCELLENT**

Symmetry **EXCELLENT**

Fluorescence **NONE**

Inscription(s) **IGI LG623405963**

Comments: This Laboratory Grown Diamond was created by Chemical Vapor Deposition (CVD) growth process and may include post-growth treatment. Type IIa



IGI

March 4, 2024
IGI Report No **LG623405963**
CUSHION MODIFIED BRILLIANT
6.90 X 6.45 X 4.35 MM
Carat Weight **1.54 CARAT**
Color Grade **J**
Clarity Grade **VVS 2**
Depth **67.4%**
Table **60%**
Girdle **Slightly Thick To Thick (Faceted)**
Culet **Pointed**
Polish **EXCELLENT**
Symmetry **EXCELLENT**
Fluorescence **NONE**
Inscription(s) **IGI LG623405963**

Comments: This Laboratory Grown Diamond was created by Chemical Vapor Deposition (CVD) growth process and may include post-growth treatment. Type IIa