



ELECTRONIC COPY

LG623405971

Report verification at igi.org

LABORATORY GROWN DIAMOND REPORT

March 5, 2024
IGI Report Number LG623405971
Description LABORATORY GROWN DIAMOND
Shape and Cutting Style ROUND BRILLIANT
Measurements 7.29 - 7.33 X 4.54 MM

GRADING RESULTS

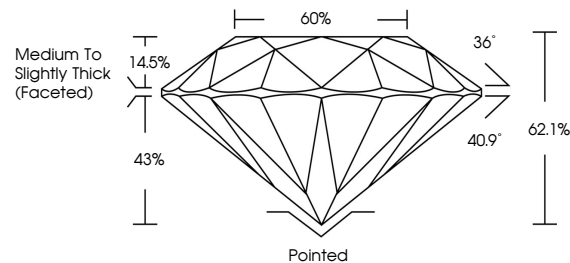
Carat Weight 1.52 CARAT
Color Grade G
Clarity Grade VS 1
Cut Grade EXCELLENT

ADDITIONAL GRADING INFORMATION

Polish EXCELLENT
Symmetry EXCELLENT
Fluorescence NONE
Inscription(s) IGI LG623405971

Comments: This Laboratory Grown Diamond was created by Chemical Vapor Deposition (CVD) growth process and may include post-growth treatment. Type IIa

PROPORTIONS



GRADING SCALES

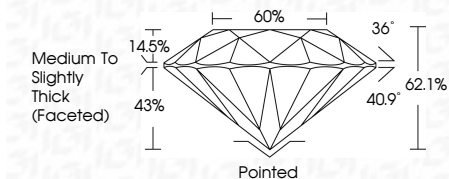
CLARITY

Table with 5 columns: IF, VVS 1-2, VS 1-2, SI 1-2, I 1-3. Row: Internally Flawless, Very Very Slightly Included, Very Slightly Included, Slightly Included, Included

COLOR

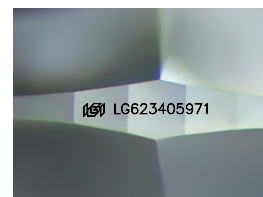
Table with 7 columns: D, E, F, G, H, I, J, Faint, Very Light, Light

March 5, 2024
IGI Report Number LG623405971
Description LABORATORY GROWN DIAMOND
Shape and Cutting Style ROUND BRILLIANT
Measurements 7.29 - 7.33 X 4.54 MM
GRADING RESULTS
Carat Weight 1.52 CARAT
Color Grade G
Clarity Grade VS 1
Cut Grade EXCELLENT



ADDITIONAL GRADING INFORMATION

Polish EXCELLENT
Symmetry EXCELLENT
Fluorescence NONE
Inscription(s) IGI LG623405971
Comments: This Laboratory Grown Diamond was created by Chemical Vapor Deposition (CVD) growth process and may include post-growth treatment. Type IIa



Sample Image Used



IGI

March 5, 2024
IGI Report No LG623405971
ROUND BRILLIANT
7.29 - 7.33 X 4.54 MM
1.52 CARAT
Color Grade G
Clarity Grade VS 1
Depth 62.1%
Table 60%
Medium To Slightly Thick (Faceted)
Culet Pointed
Polish EXCELLENT
Symmetry EXCELLENT
Fluorescence NONE
Inscriptions(s) IGI LG623405971
Comments: This Laboratory Grown Diamond was created by Chemical Vapor Deposition (CVD) growth process and may include post-growth treatment. Type IIa