



**ELECTRONIC COPY**

LG623406056

Report verification at [igi.org](http://igi.org)

**LABORATORY GROWN DIAMOND REPORT**

March 14, 2024  
IGI Report Number **LG623406056**

Description **LABORATORY GROWN  
DIAMOND**

Shape and Cutting Style **SQUARE CUSHION MODIFIED  
BRILLIANT**

Measurements **7.05 X 6.78 X 4.59 MM**

**GRADING RESULTS**

Carat Weight **1.91 CARAT**

Color Grade **F**

Clarity Grade **VS 1**

**ADDITIONAL GRADING INFORMATION**

Polish **EXCELLENT**

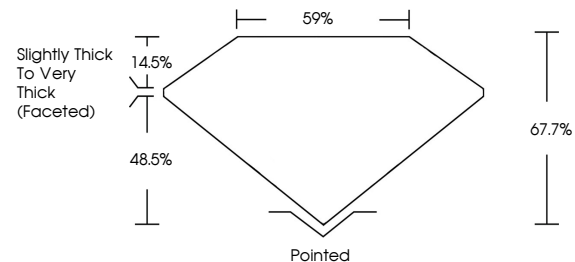
Symmetry **EXCELLENT**

Fluorescence **NONE**

Inscription(s) **IGI LG623406056**

Comments: This Laboratory Grown Diamond was created by Chemical Vapor Deposition (CVD) growth process and may include post-growth treatment. Type IIa

**PROPORTIONS**



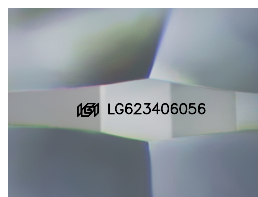
**GRADING SCALES**

**CLARITY**

IF	VVS <sup>1-2</sup>	VS <sup>1-2</sup>	SI <sup>1-2</sup>	I <sup>1-3</sup>
Internally Flawless	Very Very Slightly Included	Very Slightly Included	Slightly Included	Included

**COLOR**

D	E	F	G	H	I	J	Faint	Very Light	Light
---	---	---	---	---	---	---	-------	------------	-------



Sample Image Used

March 14, 2024  
IGI Report Number **LG623406056**  
Description **LABORATORY GROWN  
DIAMOND**  
Shape and Cutting Style **SQUARE CUSHION MODIFIED  
BRILLIANT**

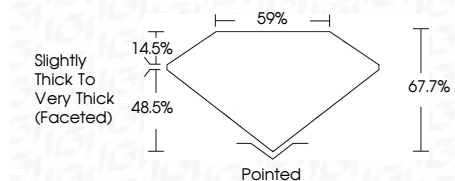
Measurements **7.05 X 6.78 X 4.59 MM**

**GRADING RESULTS**

Carat Weight **1.91 CARAT**

Color Grade **F**

Clarity Grade **VS 1**



**ADDITIONAL GRADING INFORMATION**

Polish **EXCELLENT**

Symmetry **EXCELLENT**

Fluorescence **NONE**

Inscription(s) **IGI LG623406056**

Comments: This Laboratory Grown Diamond was created by Chemical Vapor Deposition (CVD) growth process and may include post-growth treatment. Type IIa



**IGI**

March 14, 2024  
IGI Report No **LG623406056**  
**SQUARE CUSHION MODIFIED BRILLIANT**  
7.05 X 6.78 X 4.59 MM  
Carat Weight **1.91 CARAT**  
Color Grade **F**  
Clarity Grade **VS 1**  
Depth **67.7%**  
Table **59%**  
Girdle **Slightly Thick To Very Thick (Faceted)**  
Culet **Pointed**  
Polish **EXCELLENT**  
Symmetry **EXCELLENT**  
Fluorescence **NONE**  
Inscription(s) **IGI LG623406056**

Comments: This Laboratory Grown Diamond was created by Chemical Vapor Deposition (CVD) growth process and may include post-growth treatment. Type IIa