



ELECTRONIC COPY

LABORATORY GROWN DIAMOND REPORT

March 14, 2024
 IGI Report Number **LG623406084**
 Description **LABORATORY GROWN
DIAMOND**
 Shape and Cutting Style **SQUARE CUSHION BRILLIANT**
 Measurements **6.66 X 6.61 X 4.43 MM**
GRADING RESULTS
 Carat Weight **1.50 CARAT**
 Color Grade **F**
 Clarity Grade **VS 1**

ADDITIONAL GRADING INFORMATION

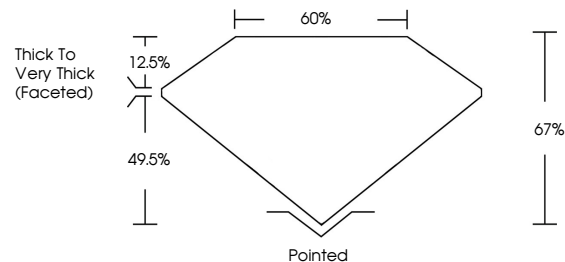
Polish **EXCELLENT**
 Symmetry **VERY GOOD**
 Fluorescence **NONE**
 Inscription(s) **IGI LG623406084**

Comments: This Laboratory Grown Diamond was created by Chemical Vapor Deposition (CVD) growth process and may include post-growth treatment. Type IIa

LABORATORY GROWN DIAMOND REPORT

LG623406084
 Report verification at igi.org

PROPORTIONS



**LABORATORY GROWN
DIAMOND REPORT**

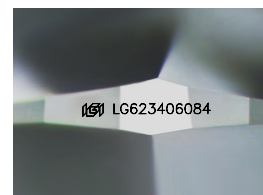
GRADING SCALES

CLARITY

IF	VVS ¹⁻²	VS ¹⁻²	SI ¹⁻²	I ¹⁻³
Internally Flawless	Very Very Slightly Included	Very Slightly Included	Slightly Included	Included

COLOR

D	E	F	G	H	I	J	Faint	Very Light	Light
---	---	---	---	---	---	---	-------	------------	-------



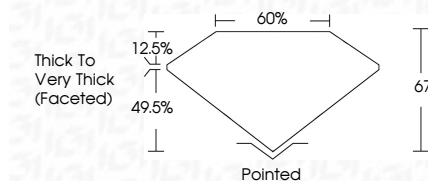
Sample Image Used

LABORATORY GROWN DIAMOND REPORT

March 14, 2024
 IGI Report Number **LG623406084**
 Description **LABORATORY GROWN
DIAMOND**
 Shape and Cutting Style **SQUARE CUSHION BRILLIANT**
 Measurements **6.66 X 6.61 X 4.43 MM**
GRADING RESULTS
 Carat Weight **1.50 CARAT**
 Color Grade **F**
 Clarity Grade **VS 1**

ADDITIONAL GRADING INFORMATION

Polish **EXCELLENT**
 Symmetry **VERY GOOD**
 Fluorescence **NONE**
 Inscription(s) **IGI LG623406084**
 Comments: This Laboratory Grown Diamond was created by Chemical Vapor Deposition (CVD) growth process and may include post-growth treatment. Type IIa



IGI

March 14, 2024
 IGI Report No **LG623406084**
SQUARE CUSHION BRILLIANT
6.66 X 6.61 X 4.43 MM
 Carat Weight **1.50 CARAT**
 Color Grade **F**
 Clarity Grade **VS 1**
 Depth **67%**
 Table **60%**
 Girdle **Thick to Very Thick (Faceted)**
 Culet **Pointed**
 Polish **EXCELLENT**
 Symmetry **VERY GOOD**
 Fluorescence **NONE**
 Inscription(s) **IGI LG623406084**

Comments: This Laboratory Grown Diamond was created by Chemical Vapor Deposition (CVD) growth process and may include post-growth treatment. Type IIa