



ELECTRONIC COPY

LABORATORY GROWN DIAMOND REPORT

Measurements 7.09 X 6.99 X 4.63 MM

GRADING RESULTS

Clarity Grade VS 1

ADDITIONAL GRADING INFORMATION

Symmetry **EXCELLENT**

Inscription(s) LG623413862

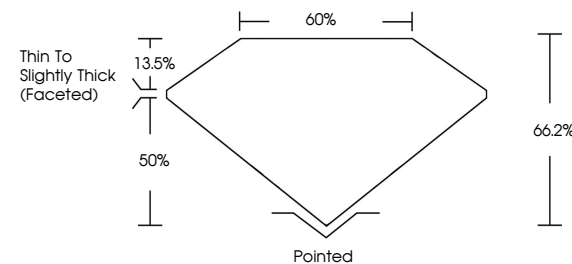
Comments: This Laboratory Grown Diamond was created by Chemical Vapor Deposition (CVD) growth process and may include post-growth treatment.
Type IIa

LABORATORY GROWN DIAMOND REPORT

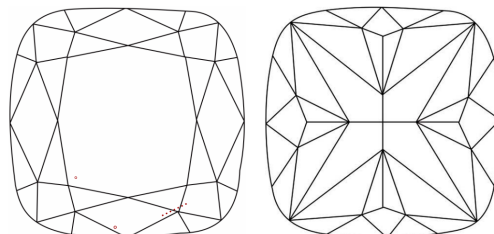
LG623413862

Report verification at igi.org

PROPORTIONS



CLARITY CHARACTERISTICS



KEY TO SYMBOLS

Red symbols indicate internal characteristics.
Green symbols indicate external characteristics.

LABORATORY GROWN
DIAMOND REPORT

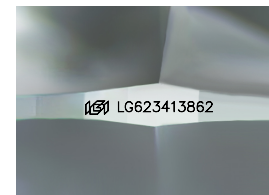
GRADING SCALES

CLARITY

IF	VVS ¹⁻²	VS ¹⁻²	SI ¹⁻²	I ¹⁻³
Internally Flawless	Very Very Slightly Included	Very Slightly Included	Slightly Included	Included

COLOR

D E F G H I J Faint Very Light Light



Sample Image Used



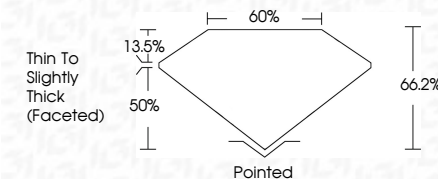
Description	LABORATORY GROWN DIAMOND
-------------	-----------------------------

Measurements 7.09 X 6.99 X 4.63 MM

GRADING RESULTS

Color Grade **G**

Clarity Grade VS 1



ADDITIONAL GRADING INFORMATION

Symmetry **EXCELLENCE**

Fluorescence NONI

Inscription(s) LG62341386

Comments: This Laboratory Grown Diamond was created by Chemical Vapor Deposition (CVD) growth process and may include post-growth treatment.
Type IIa



© IGI 2020, International Gemological Institute

FD - 10 20

www.igi.org

THIS DOCUMENT WAS PRODUCED WITH THE FOLLOWING SECURITY MEASURES: SPECIAL DOCUMENT PAPER, INK SCREENS, WATERMARK BACKGROUND DESIGNS, HOLOGRAM AND OTHER SECURITY FEATURES NOT LISTED AND DO EXCEED DOCUMENT SECURITY INDUSTRY GUIDELINES

February 22, 2024	GI Report No LG523413942	1.77 CARAT
SQ ELEGANT BRILLIANT		
1.09 X .69 X 4.43 MM		
Color	Color Grade	VS 1
Clarity	Clarity Grade	64.2%
Depth	Depth	60%
Table	Table	Thin To Slightly Thick
Girdle	Girdle	(Faceted)
Culet	Culet	Pointed
Polish	Polish	EXCELLENT
Symmetry	Symmetry	EXCELLENT
Fluor. essence	Fluor. essence	NONE
Inscriptions(s)	Inscriptions(s)	681 LG523413942

Comments: This is a Fancy, Green Diamond was treated by Chemical Vapor Deposition (CVD) growth process and may include post-growth treatment.

Type IIa