



ELECTRONIC COPY

LABORATORY GROWN DIAMOND REPORT

February 27, 2024	
IGI Report Number	LG623416002
Description	LABORATORY GROWN DIAMOND
Shape and Cutting Style	ROUND BRILLIANT
Measurements	10.93 - 10.98 X 6.57 MM

GRADING RESULTS

Carat Weight	4.82 CARATS
Color Grade	G
Clarity Grade	VS 1
Cut Grade	IDEAL

ADDITIONAL GRADING INFORMATION

Polish	EXCELLENT
Symmetry	EXCELLENT
Fluorescence	NONE
Inscription(s)	 LG623416002

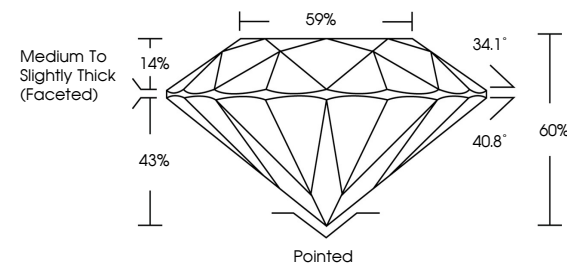
Comments: This Laboratory Grown Diamond was created by Chemical Vapor Deposition (CVD) growth process and may include post-growth treatment.
Type IIa

LABORATORY GROWN DIAMOND REPORT

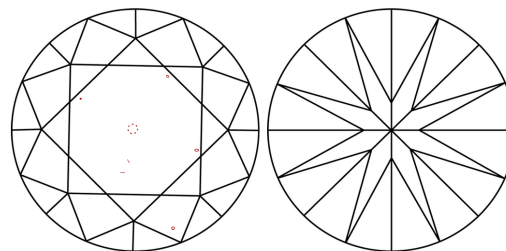
LG623416002

Report verification at igi.org

PROPORTIONS



CLARITY CHARACTERISTICS



KEY TO SYMBOLS

Red symbols indicate internal characteristics.
Green symbols indicate external characteristics.

LABORATORY GROWN
DIAMOND REPORT

GRADING SCALES

CLARITY

IF	VVS ¹⁻²	VS ¹⁻²	SI ¹⁻²	I ¹⁻³
Internally Flawless	Very Very Slightly Included	Very Slightly Included	Slightly Included	Included

COLOR

D E F G H I J Faint Very Light Light



Sample Image Used



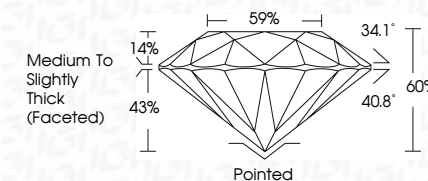
© IGI 2020, International Gemological Institute

FD - 10 20

LABORATORY GROWN DIAMOND REPORT

February 27, 2024	
IGI Report Number	LG623416002
Description	LABORATORY GROWN DIAMOND
Shape and Cutting Style	ROUND BRILLIANT
Measurements	10.93 - 10.98 X 6.57 MM

GRADING RESULTS	
Carat Weight	4.82 CARATS
Color Grade	G
Clarity Grade	VS 1
Cut Grade	IDEAL



ADDITIONAL GRADING INFORMATION

Polish	EXCELLENT
Symmetry	EXCELLENT
Fluorescence	NONE
Inscription(s)	1631 LG623416002
<p>Comments: This Laboratory Grown Diamond was created by Chemical Vapor Deposition (CVD) growth process and may include post-growth treatment.</p> <p>Type IIa</p>	



February 27, 2024	4.82 CARATS
Report No. LG263416002	G
ROUND BRILLIANT	VS 1
	IDEAL
	60%
	69%
	Medium to slightly Thick (Faceted)
	Polished
	EXCELLENT
	EXCELLENT
	NONE
	lgf LG263416002

Comments:

1. This is a Natural, Colorless, Crown Diamond was certified by Chemical Vapor Deposition (CVD) growth process and may include post-growth treatment.

Type IIa

www.igi.org

THIS DOCUMENT WAS PRODUCED WITH THE FOLLOWING SECURITY MEASURES: SPECIAL DOCUMENT PAPER, INK SCREENS, WATERMARK, RADIOGRAPHIC DETECTING, HUMIDITY, AND OTHER SECURITY FEATURES NOT LISTED, AND TWO EMBEDDED DIGITAL SIGNATURES IN EACH PAGE.