



**ELECTRONIC COPY**

LG623417244

Report verification at [igi.org](http://igi.org)

**LABORATORY GROWN DIAMOND REPORT**

February 29, 2024  
IGI Report Number **LG623417244**

Description **LABORATORY GROWN  
DIAMOND**

Shape and Cutting Style **PRINCESS CUT**

Measurements **5.53 X 5.30 X 3.79 MM**

**GRADING RESULTS**

Carat Weight **1.00 CARAT**

Color Grade **H**

Clarity Grade **VS 1**

**ADDITIONAL GRADING INFORMATION**

Polish **EXCELLENT**

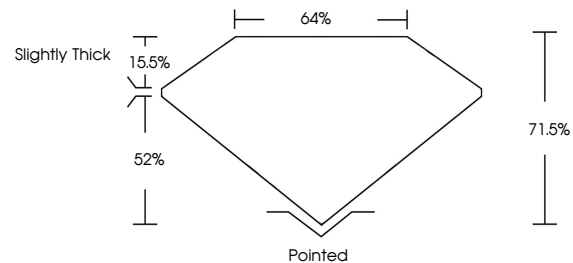
Symmetry **EXCELLENT**

Fluorescence **NONE**

Inscription(s) **IGI LG623417244**

Comments: This Laboratory Grown Diamond was created by Chemical Vapor Deposition (CVD) growth process and may include post-growth treatment. Type IIa

**PROPORTIONS**



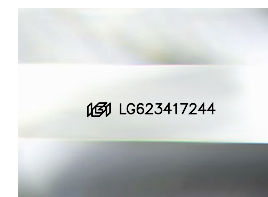
**GRADING SCALES**

**CLARITY**

IF	VVS <sup>1-2</sup>	VS <sup>1-2</sup>	SI <sup>1-2</sup>	I <sup>1-3</sup>
Internally Flawless	Very Very Slightly Included	Very Slightly Included	Slightly Included	Included

**COLOR**

D	E	F	G	H	I	J	Faint	Very Light	Light
---	---	---	---	---	---	---	-------	------------	-------



Sample Image Used

February 29, 2024  
IGI Report Number **LG623417244**  
Description **LABORATORY GROWN  
DIAMOND**

Shape and Cutting Style **PRINCESS CUT**

Measurements **5.53 X 5.30 X 3.79 MM**

**GRADING RESULTS**

Carat Weight **1.00 CARAT**

Color Grade **H**

Clarity Grade **VS 1**

**ADDITIONAL GRADING INFORMATION**

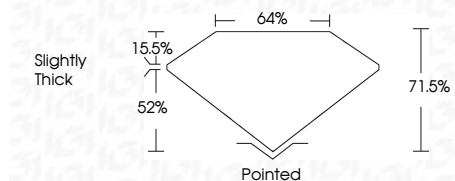
Polish **EXCELLENT**

Symmetry **EXCELLENT**

Fluorescence **NONE**

Inscription(s) **IGI LG623417244**

Comments: This Laboratory Grown Diamond was created by Chemical Vapor Deposition (CVD) growth process and may include post-growth treatment. Type IIa



**IGI**

February 29, 2024	IGI Report No LG623417244	1.00 CARAT	H	VS 1	71.5%	64%	Slightly Thick	Pointed	EXCELLENT	EXCELLENT	NONE	IGI LG623417244
PRINCESS CUT	5.53 X 5.30 X 3.79 MM	Color Grade	Clarity Grade	Table	Depth	Girdle	Culet	Polish	Symmetry	Fluorescence	Inscription(s)	

Comments: This Laboratory Grown Diamond was created by Chemical Vapor Deposition (CVD) growth process and may include post-growth treatment. Type IIa