



ELECTRONIC COPY

LG623417303

Report verification at igi.org

LABORATORY GROWN DIAMOND REPORT

February 28, 2024
IGI Report Number LG623417303

Description LABORATORY GROWN DIAMOND

Shape and Cutting Style PRINCESS CUT

Measurements 5.26 X 5.10 X 4.05 MM

GRADING RESULTS

Carat Weight 1.00 CARAT

Color Grade E

Clarity Grade SI 1

ADDITIONAL GRADING INFORMATION

Polish VERY GOOD

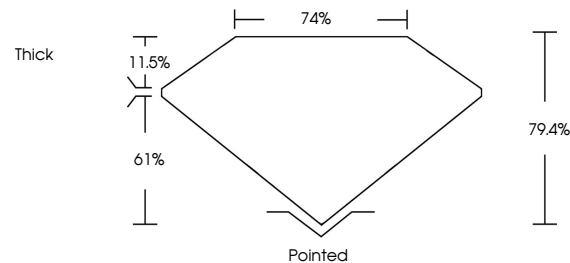
Symmetry VERY GOOD

Fluorescence NONE

Inscription(s) IGI LG623417303

Comments: This Laboratory Grown Diamond was created by Chemical Vapor Deposition (CVD) growth process and may include post-growth treatment. Type IIa

PROPORTIONS



GRADING SCALES

CLARITY

Table with 5 columns: IF, VVS 1-2, VS 1-2, SI 1-2, I 1-3. Rows: Internally Flawless, Very Very Slightly Included, Very Slightly Included, Slightly Included, Included.

COLOR

Table with 10 columns: D, E, F, G, H, I, J, Faint, Very Light, Light.

February 28, 2024

IGI Report Number LG623417303

Description LABORATORY GROWN DIAMOND

Shape and Cutting Style PRINCESS CUT

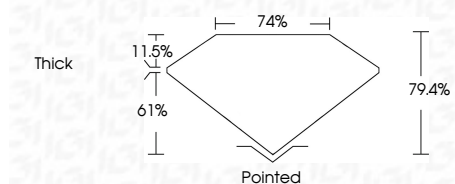
Measurements 5.26 X 5.10 X 4.05 MM

GRADING RESULTS

Carat Weight 1.00 CARAT

Color Grade E

Clarity Grade SI 1



ADDITIONAL GRADING INFORMATION

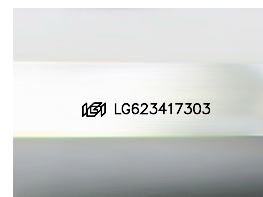
Polish VERY GOOD

Symmetry VERY GOOD

Fluorescence NONE

Inscription(s) IGI LG623417303

Comments: This Laboratory Grown Diamond was created by Chemical Vapor Deposition (CVD) growth process and may include post-growth treatment. Type IIa



Sample Image Used



IGI



February 28, 2024
IGI Report No LG623417303
PRINCESS CUT

5.26 X 5.10 X 4.05 MM
1.00 CARAT
E
SI 1
79.4%
74%
Thick
Pointed
VERY GOOD
VERY GOOD
NONE
IGI LG623417303

Comments: This Laboratory Grown Diamond was created by Chemical Vapor Deposition (CVD) growth process and may include post-growth treatment. Type IIa