



**INTERNATIONAL  
GEMOLOGICAL  
INSTITUTE**

**ELECTRONIC COPY**

## LABORATORY GROWN DIAMOND REPORT

February 23, 2024	
IGI Report Number	LG623433278
Description	LABORATORY GROWN DIAMOND
Shape and Cutting Style	ROUND BRILLIANT
Measurements	7.47 - 7.50 X 4.60 MM

## GRADING RESULTS

Carat Weight	1.59 CARAT
Color Grade	E
Clarity Grade	VVS 2
Cut Grade	IDEAL

### ADDITIONAL GRADING INFORMATION

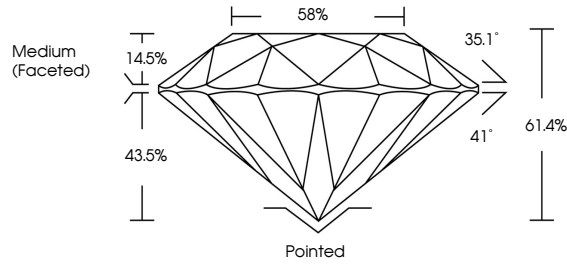
Polish	EXCELLENT
Symmetry	EXCELLENT
Fluorescence	NONE
Inscription(s)	 LG-623433278

Comments: This Laboratory Grown Diamond was created by Chemical Vapor Deposition (CVD) growth process and may include post-growth treatment.  
Type IIa

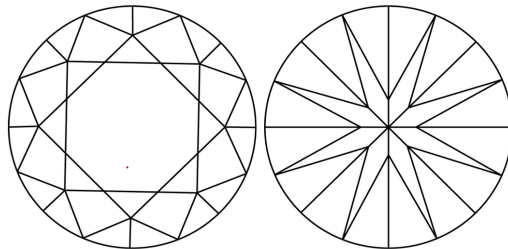
## LABORATORY GROWN DIAMOND REPORT

LG623433278  
Report verification at [igi.org](https://igi.org)

## PROPORTIONS



## CLARITY CHARACTERISTICS



## KEY TO SYMBOLS

Red symbols indicate internal characteristics.  
Green symbols indicate external characteristics.

LABORATORY GROWN  
DIAMOND REPORT

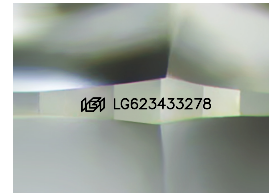
## GRADING SCALES

## CLARITY

IF	VVS <sup>1-2</sup>	VS <sup>1-2</sup>	SI <sup>1-2</sup>	I <sup>1-3</sup>
Internally Flawless	Very Very Slightly Included	Very Slightly Included	Slightly Included	Included

**COLOR**

D	E	F	G	H	I	J	Faint	Very Light	Light
---	---	---	---	---	---	---	-------	------------	-------



Sample Image Used



© IGI 2020, International Gemological Institute

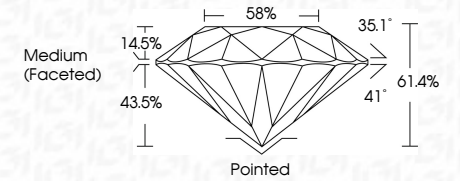
FD - 10 20

## LABORATORY GROWN DIAMOND REPORT

February 23, 2024	
IGI Report Number	LG623433278
Description	LABORATORY GROWN DIAMOND
Shape and Cutting Style	ROUND BRILLIANT
Measurements	7.47 - 7.50 X 4.60 MM

## GRADING RESULTS

Carat Weight	1.59 CARAT
Color Grade	E
Clarity Grade	VVS 2
Cut Grade	IDEAL



### ADDITIONAL GRADING INFORMATION

Polish	EXCELLENT
Symmetry	EXCELLENT
Fluorescence	NONE
Inscription(s)	(15) LG624333278
<p>Comments: This Laboratory Grown Diamond was created by Chemical Vapor Deposition (CVD) growth process and may include post-growth treatment.</p> <p>Type IIa</p>	



IGI

February 23, 2024	
IGI Report No. LG24343278	
ROUND BRILLIANT	
7.47 - 7.50 X 4.40 MM	1.59 CARAT
Color Grade	E
Clarity Grade	VVS 2
Cut Grade	IDEAL
Depth	61.4%
Table	85%
Girdle	Medium (Faceted)
Culet	Painted
Polish	EXCELLENT
Symmetry	EXCELLENT
Fluorescence	NONE
Inscription(s)	IGI LG24343278
Comments:	
	This Laboratory Grown Diamond was created by Chemical Vapor Deposition (CVD) growth process and may include post-growth treatment.
	Type Ia