



**INTERNATIONAL  
GEMOLOGICAL  
INSTITUTE**

**ELECTRONIC COPY**

**LABORATORY GROWN  
DIAMOND REPORT**

**LG623435150**

**IGI LABORATORY GROWN  
DIAMOND ID REPORT**

February 24, 2024  
IGI Report Number **LG623435150**  
**CUSHION BRILLIANT**  
**5.94 X 4.49 X 2.63 MM**  
Carat Weight 0.58 CARAT  
Color Grade FANCY VIVID GREEN  
Clarity Grade VS 1  
Polish VERY GOOD  
Symmetry VERY GOOD  
Fluorescence NONE  
Inscription(s) LG623435150

Comments: This Laboratory Grown Diamond was created by Chemical Vapor Deposition (CVD) growth process. Indications of post-growth treatment.

**LABORATORY GROWN DIAMOND REPORT**

**IGI LABORATORY GROWN DIAMOND IDENTIFICATION REPORT**

February 24, 2024  
IGI Report Number LG623435150  
Description LABORATORY GROWN DIAMOND  
Shape and Cutting Style CUSHION BRILLIANT  
Measurements 5.94 X 4.49 X 2.63 MM

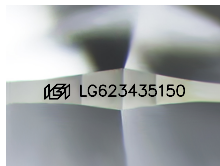
**GRADING RESULTS**

Carat Weight 0.58 CARAT  
Color Grade FANCY VIVID GREEN  
Clarity Grade VS 1

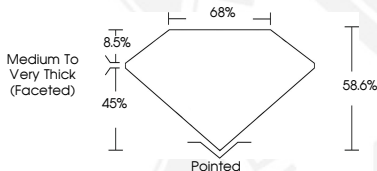
**ADDITIONAL GRADING INFORMATION**

Polish VERY GOOD  
Symmetry VERY GOOD  
Fluorescence NONE  
Inscription(s) LG623435150

Comments: This Laboratory Grown Diamond was created by Chemical Vapor Deposition (CVD) growth process. Indications of post-growth treatment.



Sample Image Used



**IGI LABORATORY GROWN  
DIAMOND ID REPORT**

February 24, 2024  
IGI Report Number **LG623435150**  
**CUSHION BRILLIANT**  
**5.94 X 4.49 X 2.63 MM**  
Carat Weight 0.58 CARAT  
Color Grade FANCY VIVID GREEN  
Clarity Grade VS 1  
Polish VERY GOOD  
Symmetry VERY GOOD  
Fluorescence NONE  
Inscription(s) LG623435150

Comments: This Laboratory Grown Diamond was created by Chemical Vapor Deposition (CVD) growth process. Indications of post-growth treatment.

THIS DOCUMENT WAS PRODUCED WITH THE FOLLOWING SECURITY MEASURES: SPECIAL DOCUMENT PAPER, INK SCREENS, WATERMARK, BACKGROUND DESIGN, HOLOGRAM AND OTHER SECURITY FEATURES NOT LISTED AND DO EXCEED DOCUMENT SECURITY INDUSTRY GUIDELINES.

For terms & conditions and to verify this report, please visit [www.igi.org](http://www.igi.org)