

ELECTRONIC COPY

LABORATORY GROWN DIAMOND REPORT

| | |
|-------------------------|-----------------------------|
| February 24, 2024 | |
| IGI Report Number | LG623435317 |
| Description | LABORATORY GROWN DIAMOND |
| Shape and Cutting Style | ROUND BRILLIANT |
| Measurements | 7.11 - 7.14 X 4.32 MM |

GRADING RESULTS

| | |
|---------------|------------|
| Carat Weight | 1.36 CARAT |
| Color Grade | D |
| Clarity Grade | VVS 2 |
| Cut Grade | IDEAL |

ADDITIONAL GRADING INFORMATION

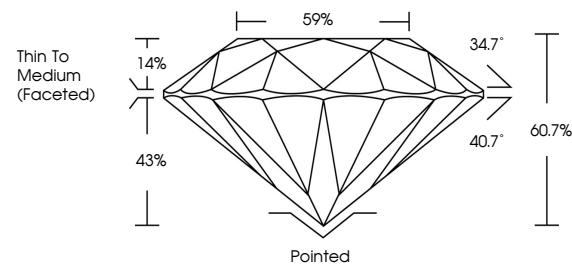
| | |
|----------------|----------------|
| Polish | EXCELLENT |
| Symmetry | EXCELLENT |
| Fluorescence | NONE |
| Inscription(s) | 15 LG623435317 |

Comments: As Grown - No indication of post-growth treatment.
This Laboratory Grown Diamond was created by High Pressure High Temperature (HPHT) growth process.
Type II

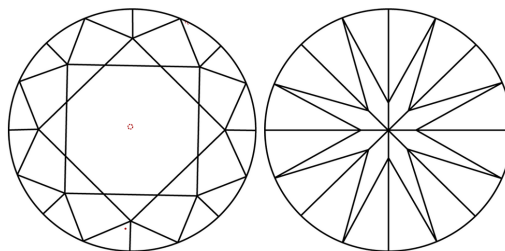
LABORATORY GROWN DIAMOND REPORT

LG623435317
Report verification at igi.org

PROPORTIONS



CLARITY CHARACTERISTICS



KEY TO SYMBOLS

Red symbols indicate internal characteristics.
Green symbols indicate external characteristics.

LABORATORY GROWN
DIAMOND REPORT

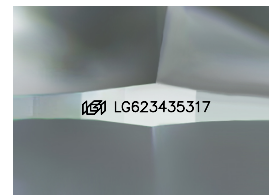
GRADING SCALES

CLARITY

| IF | VVS ¹⁻² | VS ¹⁻² | SI ¹⁻² | I ¹⁻³ |
|---------------------|-----------------------------|------------------------|-------------------|------------------|
| Internally Flawless | Very Very Slightly Included | Very Slightly Included | Slightly Included | Included |

COLOR

D E F G H I J Faint Very Light Light



Sample Image Used



© IGI 2020, International Gemological Institute

FD - 10 20



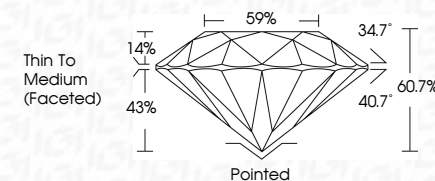
THIS DOCUMENT WAS PRODUCED WITH THE FOLLOWING SECURITY MEASURES: SPECIAL DOCUMENT PAPER, INK SCREENS, WATERMARK, BACKGROUND DESIGNS, HOLOGRAM AND OTHER SECURITY FEATURES NOT LISTED AND DO EXCEED DOCUMENT SECURITY INDUSTRY GUIDELINES

LABORATORY GROWN DIAMOND REPORT

| | |
|-------------------------|-----------------------------|
| February 24, 2024 | |
| IGI Report Number | LG623435317 |
| Description | LABORATORY GROWN DIAMOND |
| Shape and Cutting Style | ROUND BRILLIANT |
| Measurements | 7.11 - 7.14 X 4.32 MM |

GRADING RESULTS

| | |
|---------------|------------|
| Carat Weight | 1.36 CARAT |
| Color Grade | D |
| Clarity Grade | VVS 2 |
| Cut Grade | IDEAL |



ADDITIONAL GRADING INFORMATION

| | |
|--|---|
| Polish | EXCELLENT |
| Symmetry | EXCELLENT |
| Fluorescence | NONE |
| Inscription(s) |  LG623435317 |
| Comments: As Grown - No indication of post-growth treatment. | |
| This Laboratory Grown Diamond was created by High Pressure High Temperature (HPHT) growth process. | |
| Type II | |



| | | | | | |
|---|--|------------------------------|----------------------|-----------------------|------------------------|
| February 24, 2024 | | | | | |
| GIGI Report No LG934838317 | | | | | |
| ROUND BRILLANT | | | | | |
| | | Carat Weight | Color Grade | Clarity Grade | D |
| | | 1.71 - 1.74 X 4.32 MM | | VVS 2 | 1.36 CARAT |
| | | | Cut Grade | Depth | IDEA! |
| | | | Table | Girdle | 60.17% |
| | | | | | 59% |
| | | | | Thin To Medium | (Faceted) |
| | | | Culet | Symmetry | Poited |
| | | | Inclusions(?) | Fluorescence | B'CELLENT |
| | | | | | NONE |
| | | | | | #6H LG934838317 |
| Comments: | | | | | |
| No indication of post-growth treatment. | | | | | |
| This Laboratory Growth Diamond was created by High Pressure High Temperature (HPHT) growth process. | | | | | |
| Type II | | | | | |