



LABORATORY GROWN DIAMOND REPORT

GRADING RESULTS

ADDITIONAL GRADING INFORMATION

Comments: This Laboratory Grown Diamond was created by Chemical Vapor Deposition (CVD) growth process and may include post-growth treatment.
Type IIa

LG623445905
Report verification at igi.org

Diagram illustrating the proportions of a diamond-shaped gemstone:

- Top width: 59%
- Height: 62.8%
- Left side width: 15%
- Right side width: 44%
- Bottom: Pointed
- Left side description: Medium To Slightly Thick (Faceted)

Red symbols indicate internal characteristics.
Green symbols indicate external characteristics.

GRADING SCALES

IF	VVS ¹⁻²	VS ¹⁻²	SI ¹⁻²	I ¹⁻³
Internally Flawless	Very Very Slightly Included	Very Slightly Included	Slightly Included	Included

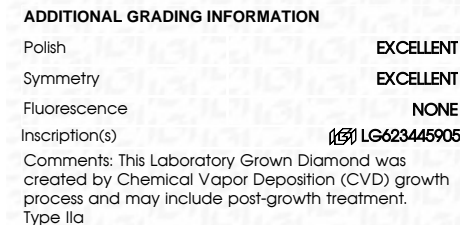
D E F G H I J Faint Very Light Light



FD - 10 20

www.igi.org

February 27, 2024	
IGI Report Number	LG623445905
Description	LABORATORY GROWN DIAMOND
Shape and Cutting Style	MARQUEISE BRILLIANT
Measurements	11.53 X 6.10 X 3.83 MM
GRADING RESULTS	
Carat Weight	1.52 CARAT
Color Grade	F
Clarity Grade	VS 2



February 27, 2024	Carat Weight	1.82 CARAT
GI Report No. LG23446905	Color Grade	F
MANHOUSE BRILLIANT	Clarity Grade	VS 2
11.53 X 10 X 3.83 MM	Depth	62.8%
	Table	59%
	Grade	Medium To Slightly Thick Faceted
	Quiet	Polished
	Polish	EXCELLENT
	Symmetry	EXCELLENT
	Fluorescence	NONE
	Inscription(s)	689 LG23446905

Comments:

This Laboratory Grown Diamond was created by Chemical Vapor Deposition (CVD) and may include surface and/or internal treatment.

Type IIG

THIS DOCUMENT WAS PRODUCED WITH THE FOLLOWING SECURITY MEASURES: SPECIAL DOCUMENT PAPER, INK SCREENS, WATERMARK, BACKGROUND DESIGNS, HOLOGRAM AND OTHER SECURITY FEATURES NOT LISTED AND DO EXCEED DOCUMENT SECURITY INDUSTRY GUIDELINES