



ELECTRONIC COPY

LG623459448

Report verification at igi.org

LABORATORY GROWN DIAMOND REPORT

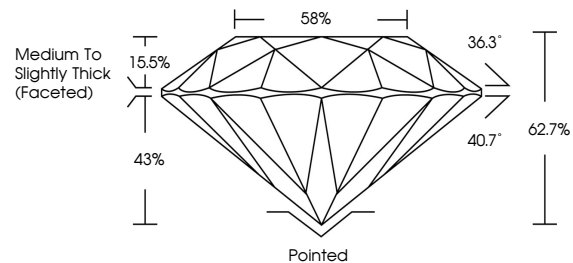
March 4, 2024
IGI Report Number LG623459448
Description LABORATORY GROWN DIAMOND
Shape and Cutting Style ROUND BRILLIANT
Measurements 10.01 - 10.06 X 6.30 MM
GRADING RESULTS
Carat Weight 4.00 CARATS
Color Grade G
Clarity Grade VS 2
Cut Grade EXCELLENT

ADDITIONAL GRADING INFORMATION

Polish EXCELLENT
Symmetry EXCELLENT
Fluorescence NONE
Inscription(s) IGI LG623459448

Comments: This Laboratory Grown Diamond was created by Chemical Vapor Deposition (CVD) growth process and may include post-growth treatment. Type IIa

PROPORTIONS



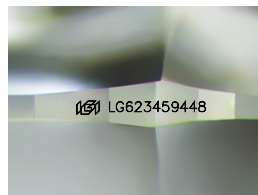
GRADING SCALES

CLARITY

Table with 5 columns: IF, VVS 1-2, VS 1-2, SI 1-2, I 1-3. Row 1: Internally Flawless, Very Very Slightly Included, Very Slightly Included, Slightly Included, Included

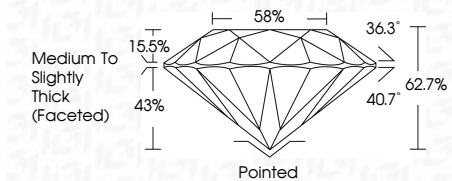
COLOR

Table with 11 columns: D, E, F, G, H, I, J, Faint, Very Light, Light



Sample Image Used

March 4, 2024
IGI Report Number LG623459448
Description LABORATORY GROWN DIAMOND
Shape and Cutting Style ROUND BRILLIANT
Measurements 10.01 - 10.06 X 6.30 MM
GRADING RESULTS
Carat Weight 4.00 CARATS
Color Grade G
Clarity Grade VS 2
Cut Grade EXCELLENT



ADDITIONAL GRADING INFORMATION

Polish EXCELLENT
Symmetry EXCELLENT
Fluorescence NONE
Inscription(s) IGI LG623459448
Comments: This Laboratory Grown Diamond was created by Chemical Vapor Deposition (CVD) growth process and may include post-growth treatment. Type IIa



IGI



Summary of report details including date, report number, measurements, grading results, and contact information.