



ELECTRONIC COPY

LABORATORY GROWN DIAMOND REPORT

February 28, 2024	
IGI Report Number	LG623459970
Description	LABORATORY GROWN DIAMOND
Shape and Cutting Style	ROUND BRILLIANT
Measurements	10.80 - 10.84 X 6.68 MM

GRADING RESULTS

Carat Weight	4.84 CARATS
Color Grade	G
Clarity Grade	VVS 2
Cut Grade	IDEAL

ADDITIONAL GRADING INFORMATION

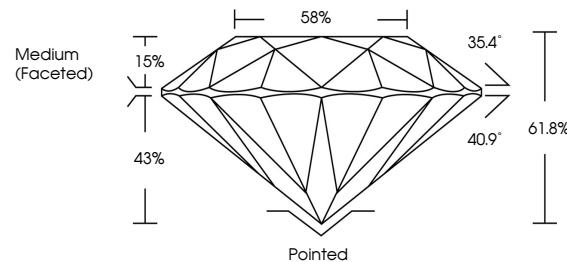
Polish	EXCELLENT
Symmetry	EXCELLENT
Fluorescence	NONE
Inscription(s)	LG623459970

Comments: This Laboratory Grown Diamond was created by Chemical Vapor Deposition (CVD) growth process and may include post-growth treatment.
Type IIa

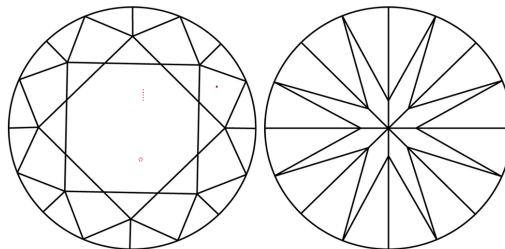
LABORATORY GROWN DIAMOND REPORT

LG623459970
Report verification at igi.org

PROPORTIONS



CLARITY CHARACTERISTICS



KEY TO SYMBOLS

Red symbols indicate internal characteristics.
Green symbols indicate external characteristics.

LABORATORY GROWN
DIAMOND REPORT

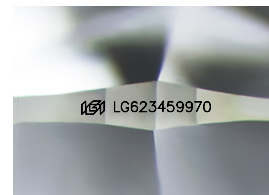
GRADING SCALES

CLARITY

IF	VVS ¹⁻²	VS ¹⁻²	SI ¹⁻²	I ¹⁻³
Internally Flawless	Very Very Slightly Included	Very Slightly Included	Slightly Included	Included

COLOR

D E F G H I J Faint Very Light Light



Sample Image Used



© IGI 2020, International Gemological Institute

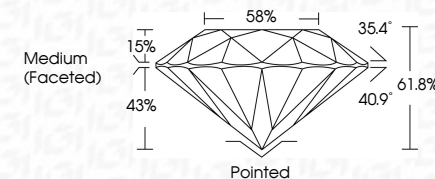
FD - 10 20

LABORATORY GROWN DIAMOND REPORT

February 28, 2024	
IGI Report Number	LG623459970
Description	LABORATORY GROWN DIAMOND
Shape and Cutting Style	ROUND BRILLIANT
Measurements	10.80 - 10.84 X 6.68 MM

GRADING RESULTS

Carat Weight	4.84 CARATS
Color Grade	G
Clarity Grade	VVS 2
Cut Grade	IDEAL



ADDITIONAL GRADING INFORMATION

Polish	EXCELLENT
Symmetry	EXCELLENT
Fluorescence	NONE
Inscription(s)	 LG-623459970

Comments: This Laboratory Grown Diamond was created by Chemical Vapor Deposition (CVD) growth process and may include post-growth treatment.
Type IIa



IG

February 28, 2024	Report No LG523459770	4.84 CARATS	VVS 2	Pointed	Comments: This Fancy Green Diamond was treated by Chemical Vapor Deposition (CVD) growth process and may include post-growth treatment.
ROUND BRILLIANT	Color Grade	IDEAL	61.5%	EXCELLENT	
10.80 - 10.84 X 4.68 MM	Clarity Grade	55%	Medium Faceted	NONE	
	Cut Grade			461 LG523459770	
	Depth				
	Table			Quiet	Type IIA
	Girdle			Polish	
				Symmetry	
				Fluorescence	
				Inscriptions(s)	