

**ELECTRONIC COPY**

## LABORATORY GROWN DIAMOND REPORT

February 28, 2024	
IGI Report Number	LG623461479
Description	LABORATORY GROWN DIAMOND
Shape and Cutting Style	CUT CORNERED RECTANGULAR MODIFIED BRILLIANT
Measurements	7.21 X 5.04 X 3.35 MM

## GRADING RESULTS

Carat Weight	1.07 CARAT
Color Grade	E
Clarity Grade	VVS 2

### ADDITIONAL GRADING INFORMATION

Polish	EXCELLENT
Symmetry	EXCELLENT
Fluorescence	NONE

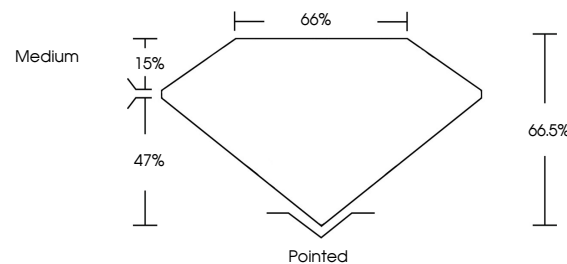
Inscription(s)  LG623461479

Comments: As Grown - No indication of post-growth treatment.  
This Laboratory Grown Diamond was created by High Pressure High Temperature (HPHT) growth process.  
Type II

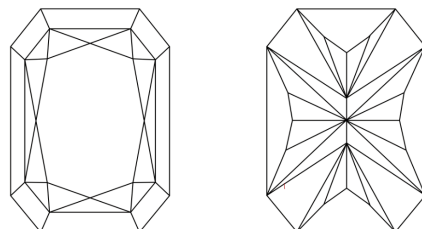
## LABORATORY GROWN DIAMOND REPORT

LG623461479  
Report verification at [igi.org](https://igi.org)

## PROPORTIONS



## CLARITY CHARACTERISTICS



### KEY TO SYMBOLS

Red symbols indicate internal characteristics.  
Green symbols indicate external characteristics.

LABORATORY GROWN  
DIAMOND REPORT

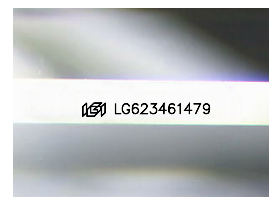
## GRADING SCALES

## CLARITY

IF	VVS <sup>1-2</sup>	VS <sup>1-2</sup>	SI <sup>1-2</sup>	I <sup>1-3</sup>
Internally Flawless	Very Very Slightly Included	Very Slightly Included	Slightly Included	Included

**COLOR**

D E F G H I J Faint Very Light Light



Sample Image Used

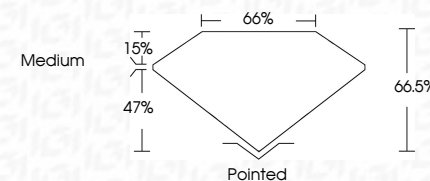


© IGI 2020, International Gemological Institute

FD - 10 20



February 28, 2024	
IGI Report Number	LG623461479
Description	LABORATORY GROWN DIAMOND
Shape and Cutting Style	CUT CORNERED RECTANGULAR MODIFIED BRILLIANT
Measurements	7.21 X 5.04 X 3.35 MM
GRADING RESULTS	
Carat Weight	1.07 CARAT
Color Grade	E
Clarity Grade	VVS 2



### ADDITIONAL GRADING INFORMATION

Polish	EXCELLENT
Symmetry	EXCELLENT
Fluorescence	NONE
Inscription(s)	<del>(G)</del> LG623461479
Comments: As Grown - No indication of post-growth treatment.	
This Laboratory Grown Diamond was created by High Pressure High Temperature (HPHT) growth process.	
Type II	

February 28, 2024	GI Report No. LG523461479	CUT CORNERED RECT. MODIFIED BRILLIANT
1.07 CARAT		
Color	Grade	VVS 2
Depth	Grade	66.5%
Table	Grade	66%
Side	Grade	Medium
Clarity	Grade	Polished
Symmetry	Grade	EXCELLENT
Fluorescence	Grade	EXCELLENT
Inscriptions (s)	Grade	NONE
681 LG523461479		
Comments: 1. No indication of post-growth treatment.		
2. The Laboratory Growth Diamond was created by High Pressure High Temperature (HPHT) growth process.		
Type II		